



# JUNE 2021 QUARTERLY ACTIVITIES REPORT

## HIGHLIGHTS

- **Lithium Option exercised with Green Technology Metals Limited (GTM) to deliver up to \$9.2M value to Ardiden, inclusive of a minimum \$3.25M in cash, subject to shareholder approval.**
- **Recent airborne geophysics flown over the Western Hub of Ardiden's Pickle Lake Gold project reveal additional Tier 1 scale targets.**
- **First Nation negotiations stepped-up at Pickle Lake as COVID-19 restrictions ease in Ontario.**

Ardiden Limited ('Ardiden' or 'the Company') (ASX: ADV) is pleased to report on June Quarterly Activities at its highly prospective **Pickle Lake Gold Project** and hard rock **Lithium Projects** in northwest Ontario, Canada.

The **Pickle Lake Gold Project** consists of a District-scale 870km<sup>2</sup> (87,000 hectares) highly prospective gold landholding within the well-endowed Uchi Geological Subprovince (Figure 1).

In addition to 3Moz of past gold production at Pickle Lake, the Uchi also hosts the 30Moz Red Lake Gold Mining centre 180km west of Pickle Lake, and the 5Moz Musselwhite mine 120km to the north.

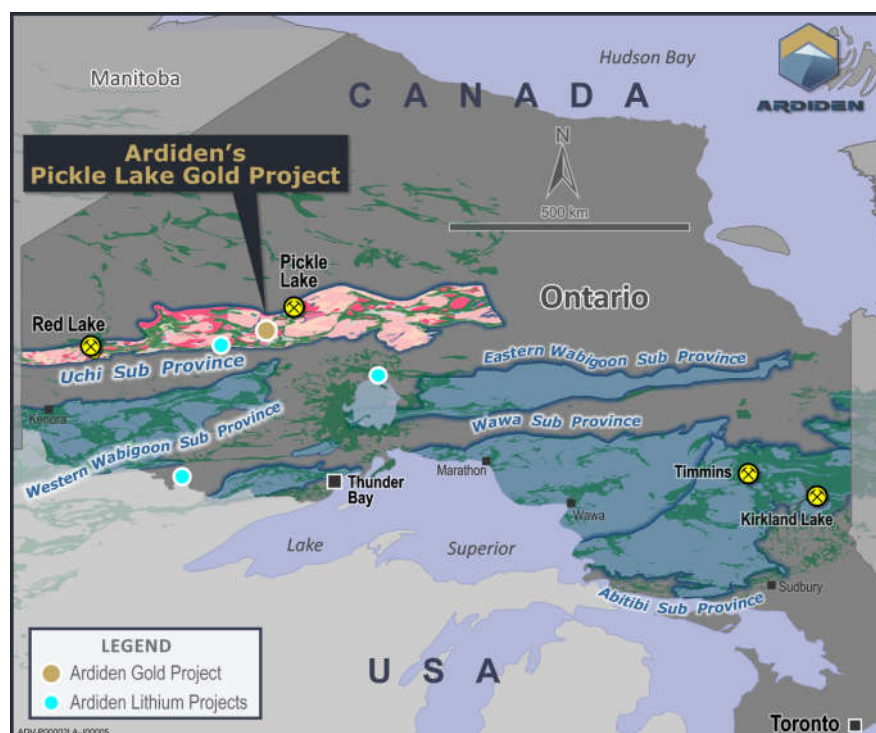


Figure 1- Location of Ardiden's Pickle Lake Gold Project within the Uchi Geological Subprovince of Ontario, Canada.

### **LITHIUM ACTIVITIES – JV to deliver up to A\$9.2M value to Ardiden**

With its non-core lithium assets in northwest Ontario, Ardiden has signed an agreement with a highly experienced lithium development team at **Green Technology Metals (GTM)**, who have exercised their Option to form a Joint Venture with Ardiden, and progressively acquire up to 80% ownership of the lithium tenements for **A\$9.2M**, subject to shareholder approval (refer ASX announcements 23 June and 28 July 2021).



**ARDIDEN**

The sale of up to 80% of the Lithium Tenements to a lithium-focused entity provides an opportunity to accelerate exploration and development of the Lithium assets within the rapidly evolving battery metals sector.

Retaining a minimum 20% interest enables Ardiden to retain upside exposure to the battery metals market without having to deploy capital towards Lithium exploration, while simultaneously providing capital for the gold exploration program at the Pickle Lake Gold Project.

Following receipt of shareholder approval, the two companies will commence an ADV 49%/GTM 51% Joint Venture moving to ADV 20%/GTM 80% upon completion of the deal. Ardiden will have a free-carry JV interest up to the completion of a Definitive Feasibility Study, or Decision to Mine milestone (refer ASX announcement 28 July 2021).

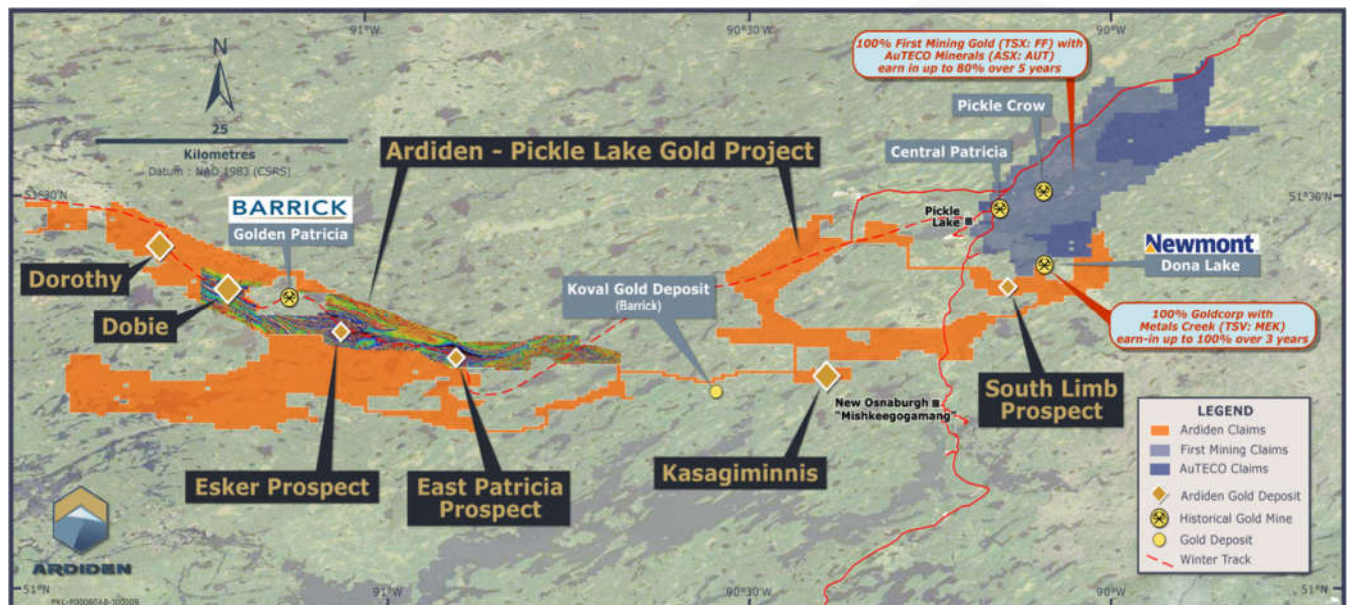
Ardiden is preparing a notice of meeting to secure shareholder approval for the transfer of the assets in accordance with Listing Rule 11.4.1 (b) and is targeting a shareholder meeting in early September 2021.

## **GOLD EXPLORATION ACTIVITIES**

### **GOLD: Western Hub - Pickle Lake Gold Project**

A recent geophysical survey undertaken by Terraquest (Figure 2 and Figure 3), extended detail coverage of the previous airborne survey over New Patricia (refer ASX announcement 13 October 2020) and now provides complete coverage of Ardiden's Western Hub.

A comprehensive geological and structural interpretation undertaken during the quarter has provided a detailed geological picture that will underpin planning of drill programmes and other exploration work along the entire 50km strike length of the Western Hub. The interpretation has identified additional Tier-1 Scale Gold Targets along the Western Hub with the Esker Gold Prospect being highlighted as the current focus of upcoming drill programmes (refer ASX Announcement 15 June 2021).



*Figure 2- Ardiden's Pickle Lake Gold Project illustrating the recent Geophysical Survey at the Western Hub*

Ardiden is actively engaging with three First Nation groups at Pickle Lake to progress upcoming exploration activities at Esker, and subsequently along the entire 50km Western Hub. The Company is committed to ensuring all work is undertaken in a way that is respectful of both Traditional Land Users and First Nation culture.



**ARDIDEN**

Ardiden is committed to developing a positive relationship, which recognizes the need for all in the relationship to mutually benefit and co-exist. With COVID restrictions easing, Ardiden's Thunder-Bay based Project Manager, (now fully vaccinated), has been travelling to the Communities around Pickle Lake to attend face-to-face meetings with First Nation Community Chiefs, Councils and Members to explain Ardiden's upcoming exploration activities, understand any concerns from the Communities, and to look for opportunities to offer employment and service provision agreements with First Nation businesses and organisations.

During the quarter Ardiden has also successfully engaged with the Ontario Mines Department (MENDN) to progress approvals to allow drilling to commence at the Esker gold prospect area, pending satisfactory consultation with First Nations representatives.

Ardiden will continue update the market as First Nation negotiations progress and when the Mines Department issue the final permit to allow drilling to commence at the Esker Gold Prospect.

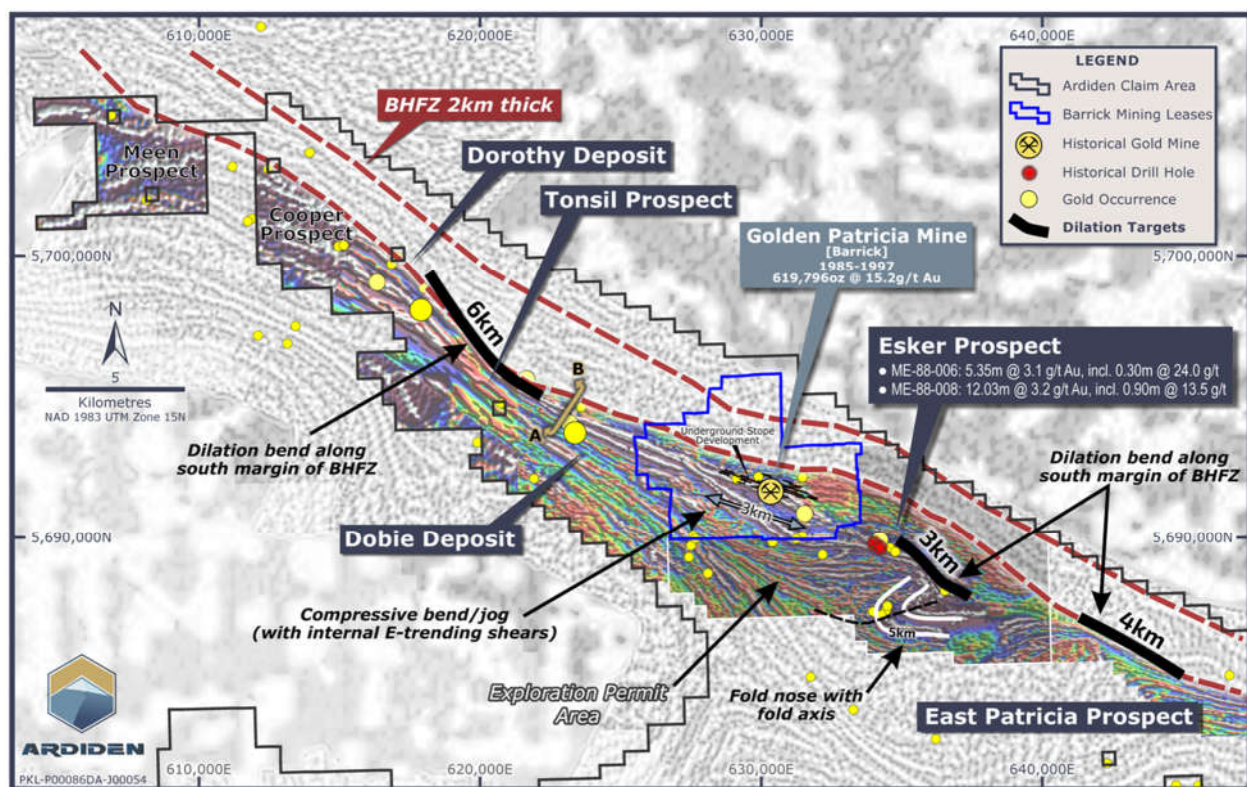


Figure 3: Planned Drilling areas along the Western Hub at Esker, Dorothy and Dobie

Following Esker, Ardiden is planning to expand drilling activities to the Company's 100%-owned **Dorothy-Dobie Deposits**, (Figure 3) located northwest of Barrick's **Golden Patricia Mine** (619,796 oz @ 15.2g/t Au production\*<sup>1</sup> from 1988 to 1997). Dorothy and Dobie Deposits host a historical estimate\*<sup>2</sup> of **99,600 oz Au @ 5.7 g/t Au** (refer ASX release 2 August 2017).

\*1 Information in relation to historical gold production at Pickle Lake and the Golden Patricia Mine has been referenced from three sources of publication, namely: 1. Harron, G. A. 2009. Technical Report on Three Gold Exploration Properties Pickle Lake Area, Ontario, Canada. G.A. Harron, P.Eng., G.A. Harron & Associates Inc. 2. Smyk, M., Hollings, P. and Pettigrew, N., 2015. Geology and Mineral Deposits of The Pickle Lake Greenstone Belt. Institute on Lake Superior Geology, May 20-24, 2015, Field Trip Guidebook and 3. Puumala, M. A. 2009. Mineral Occurrences of the Central and Eastern Uchi Domain. ON Geol. Surv., Open File Report 6228.

\*2 Non-JORC historical estimates of the Dorothy and Dobie Deposits, are not reported in accordance with the JORC Code and a competent person has not done sufficient work to classify the historical estimates as mineral resources in accordance with the JORC Code. It is uncertain that following evaluation and further exploration work that the historical estimates will be able to be reported as mineral resources in accordance with the JORC Code



### GOLD: Eastern Hub - Pickle Lake Gold Project: encompassing South Limb and Kasagiminnis

Results were provided during the quarter on Winter drilling at the Kasagiminnis Gold Deposit and South Limb Gold Prospect, which form part of the 'Eastern Hub' at the Pickle Lake Gold Project (refer ASX announcement 15 June 2021).

The winter programme was cut short at Kasagiminnis due to rapidly warming weather causing the rig to be removed from the lake. Consequently, the strike extension to the east remains untested and will be followed up at a later date utilising the improved access and with a better geological understanding.

Results at the Kasagiminnis Gold Deposit, as illustrated on (Figure 4 ) included:

- KAS21-01: 2m @ 1.22g/t from 122m
- KAS21-02: 1m @ 3.49g/t from 118m, 2.0m @ 2.34 g/t from 121m, and 1.5m @ 1.02 g/t from 129.5m
- KAS21-05: 1m @ 3.25 g/t from 103m, and 1m @ 3.95 g/t from 112m
- KAS21-06: 1m @ 1.55 g/t from 147m, 1m @ 5.25 g/t from 148m, 2m @ 1.23 g/t from 149m, 1m @ 4.55 g/t from 156m, and 1.9m @ 1.68 g/t from 161m

The high-grade one metre intercept of **5.25g/t Au** in hole KAS2106 within a broader 4m mineralised zone, averaging 2.3g/t Au from 147m, indicates that the mineralised system continues. Measurements from orientated core at Kas in conjunction with ongoing geophysical interpretations strongly indicates that identified sub-horizontal structures and offset faults represent significant controlling factors of gold distribution.

Also, during the quarter, a total of 6 holes (1,293m) were completed at the eastern end of the **South Limb** Gold Prospect before the rig was relocated to Kasagiminnis. Sampling of these holes encountered sulphides but no significant gold assays.

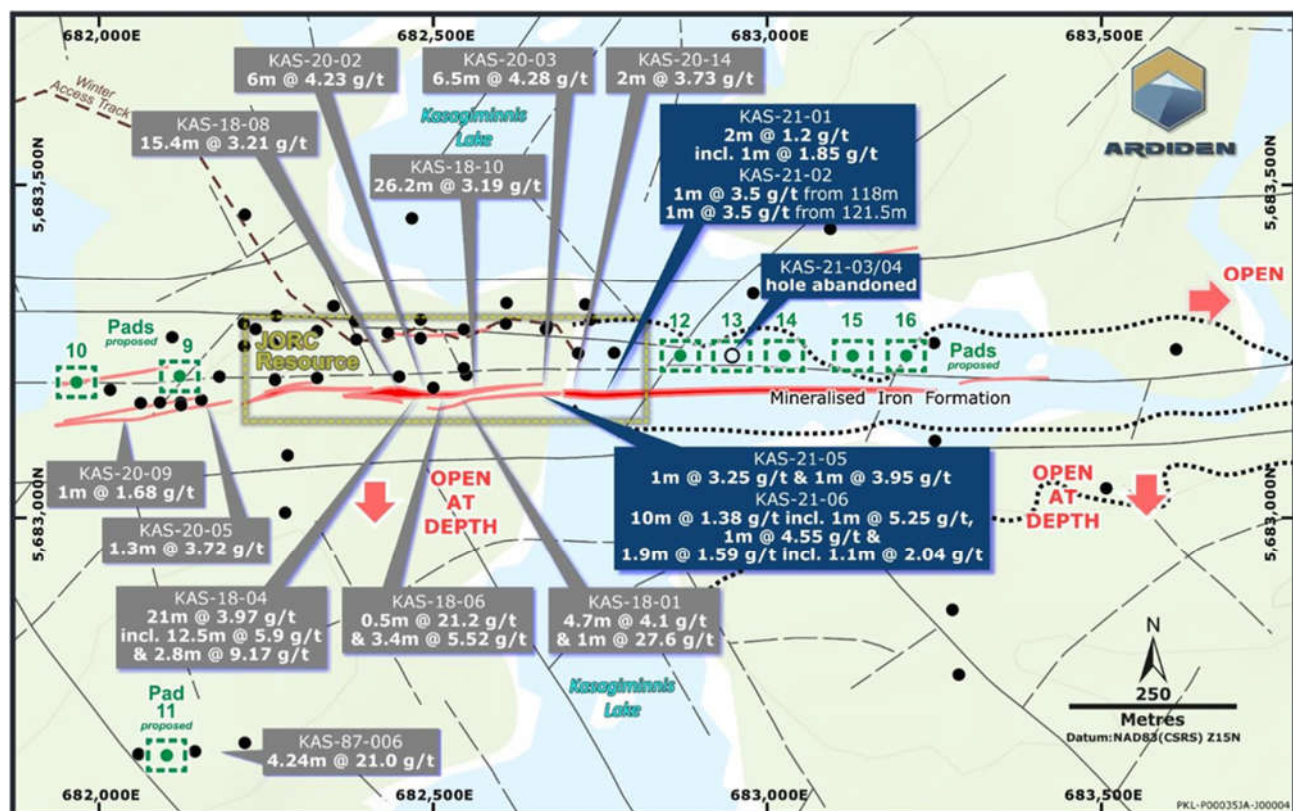


Figure 4– Kasagiminnis Gold Deposit Drill Results

## **CORPORATE**

Ardiden continues to focus on its objectives of:

1. *Extracting value for shareholders from non-core assets;*
2. *Adopting a systematic exploration approach to its Pickle Lake Gold Project; and*
3. *Respecting all stakeholders and First Nation Communities associated with the Project areas.*

The Company's cash balance on 30 June 2021 was A\$1.24 million.

Cash outflows for the June Quarter totalled \$767k which consists substantially of exploration activity of \$727k, staff costs \$113k, corporate administration \$116k, which was offset by the receipt of the option payment from GTM of \$200k. Payments to related parties and their associates (as set out in Section 6 of the Appendix 5B) totalled \$96k consisting of Executive and Non-executive Directors fees and salaries, and superannuation payments.

This information is authorised for ASX release by Rob Longley (Managing Director & CEO).

## **ENDS**

For further information:

Investors:

Rob Longley

MD & CEO

Tel: +61 8 6184 5938

[info@ardiden.com.au](mailto:info@ardiden.com.au)

Tara Robson

CFO & Company Secretary:

Tel +61 8 6184 5938

[info@ardiden.com.au](mailto:info@ardiden.com.au)

### **Forward Looking Statement**

*This announcement may contain some references to forecasts, estimates, assumptions and other forward-looking statements. Although the company believes that its expectations, estimates and forecast outcomes are based on reasonable assumptions, it can give no assurance that they will be achieved. They may be affected by a variety of variables and changes in underlying assumptions that are subject to risk factors associated with the nature of the business, which could cause actual results to differ materially from those expressed herein. All references to dollars (\$) and cents in this presentation are to Australian currency, unless otherwise stated. Investors should make and rely upon their own enquires and assessments before deciding to acquire or deal in the Company's securities.*

***The Company confirms it is not aware of any new information or data that materially affects the information included in this announcement and that all material assumptions and technical parameters underpinning the mineral resource estimates continue to apply and have not materially changed.***

***For more information including modelling parameters and details, the ASX announcements pertaining to Exploration Results and Mineral Resources are available from the Company's website: [www.ardiden.com.au](http://www.ardiden.com.au)***

### **About Ardiden Ltd**

*Ardiden Limited is an ASX-listed company focused on gold exploration at its Pickle Lake Gold Project in north-west Ontario, Canada. The project consists of 870km<sup>2</sup> of highly prospective gold landholdings across 22 identified Gold Deposits and Prospects.*

*Ardiden also has ownership of three hard rock (spodumene) Lithium Projects in north-west Ontario and is well positioned to derive benefit from both the gold and lithium exploration sectors of the market.*



**ARDIDEN**

## QUARTERLY TENEMENT SUMMARY

### 1. The mining tenements held at the end of the quarter and their location.

Gold Projects	Tenement Number/Claim ID	Status	Location	Beneficial Percentage Interest
Pickle Lake - Connections	541336, 541337, 541341, 541344, 541345, 541346, 541350, 541355, 541358, 541359, 541360, 541361, 541366, 536230, 536231, 536232, 536233, 536234, 536235, 536236, 536237, 536238, 536239, 536240, 536241, 536242, 536243, 536244, 536245, 536246, 536247, 536248, 536249, 566571, 566572, 566573, 566574, 566575, 566576, 566577, 566578, 566579, 566580, 566581, 566582, 566583, 566584, 566585, 566586, 566587, 566588, 566589, 566590, 566591, 566592, 566593, 566594, 566595, 566596, 566597, 566598, 566599, 566600, 566601, 566602, 566603, 566604, 566605, 566606, 566607, 566608, 566609, 566610, 566611, 566612, 566613, 566614, 566615, 566616, 566617	Granted	Ontario, Canada	100%
Pickle Lake – Dempster Lake	579770, 579771, 579772, 579773, 579774, 579997, 579998, 580004, 580005, 580006, 580007, 580008, 580009, 580010, 580015, 580016, 580017, 580018, 580019, 580020, 580021, 580022, 580023, 580024, 580025, 580026, 580027, 580028, 580029, 580030, 580031, 580032, 580033, 580034, 580035, 580036, 580037, 580038, 580039, 580040, 580041, 580042, 580043, 580044, 580045, 580046, 580047, 580048, 580049, 580050, 580051, 580052, 580053, 580054, 580055, 580056, 580057, 580058, 580059, 580060, 580061, 580062, 580063, 580064, 580065, 580066, 580067, 580068, 580069, 580070, 580071, 580072, 580073, 580074, 580075, 580076, 580077, 580078, 580079, 580080, 580081, 580082, 580083, 580084, 580085, 580086, 580087, 580088, 580089, 580090, 580091, 580092, 580093, 580094, 580095, 580096, 580097, 580098, 580099, 580100, 580101, 580102, 580103, 580104, 580105, 580106, 580107, 580108, 580109, 580110, 580111, 580112, 580113, 580114, 580115, 580116, 580117, 580118, 580119, 580120, 580121, 580122, 580123, 580124, 580125, 580126, 580127, 580128, 580129, 580130, 580131, 580132, 580133, 580134, 580135, 580136, 580137, 580138, 580139, 580140, 580141, 580142, 580151, 580152, 580153, 580154, 580155, 580156, 580189, 580190, 580295, 580296, 580297, 580298, 580299, 580300, 580301, 580302, 580303, 580304, 580305, 580306, 580307, 580308, 580309, 580310, 580311, 580312, 580313, 580314, 580315, 580316, 580317, 580318, 580319, 580320, 580321, 580322, 580323, 580324, 580325, 580326, 580327, 580328, 580329, 580330, 580331, 580332, 580333, 580334, 580335, 580336, 580337, 580338, 580339, 580340, 580341, 580342, 580343, 580344	Granted	Ontario, Canada	100%
Pickle Lake – Dorothy Dobie	104984, 105912, 106176, 106277, 106701, 108546, 108547, 110665, 112086, 112889, 112990, 123364, 124723, 128625, 129964, 130012, 130849, 130944, 130945, 131221, 133040, 133429, 134232, 134448, 134753, 135762, 136226, 140102, 140103, 140104, 141205, 143008, 143009, 145694, 146037, 146857, 146858, 147714, 149493, 149494, 150199, 150524, 150822, 150823, 154016, 154661, 155274, 156088, 157127, 159811, 161295, 161344, 161961, 162581, 162582, 163914, 163956, 166547, 166548, 168691, 169333, 169948, 176602, 176661, 176770, 176793, 176991, 178279, 178630, 178776, 181433, 181634, 183363, 183657, 183658, 183659, 183660, 183661, 183802, 186059, 186838, 186839, 186840, 187792, 187793, 192633, 193812, 195459, 195771, 196502, 200893, 201767, 205183, 205184, 205185, 207317, 207318, 208735, 208736, 209087, 212985, 213019, 213020, 214000, 214531, 215430, 215446, 215505, 217414, 221873, 223180, 223229,	Granted	Ontario, Canada	100%



**ARDIDEN**

Gold Projects	Tenement Number/Claim ID	Status	Location	Beneficial Percentage Interest
	225203, 231209, 231210, 231211, 233344, 234028, 234647, 235998, 236504, 236505, 236506, 236858, 237737, 237738, 242025, 242026, 242027, 242865, 242885, 245369, 246370, 246778, 248523, 250184, 250376, 250377, 250729, 250918, 250919, 250920, 251226, 251227, 252855, 253832, 253833, 253834, 254138, 254139, 254140, 255485, 255486, 257815, 257816, 261457, 261968, 262541, 265913, 265914, 269312, 269419, 272648, 273934, 273935, 274481, 277187, 279407, 279431, 279432, 282045, 282178, 282650, 284007, 287953, 287954, 289318, 290701, 292076, 292077, 292078, 297909, 297946, 298040, 299720, 299721, 300389, 301466, 302098, 302509, 302510, 303780, 308300, 308702, 308703, 308704, 310059, 310268, 310973, 311804, 316960, 316961, 316984, 316985, 317711, 319530, 319856, 322018, 323277, 323278, 323279, 329251, 329351, 332358, 333405, 334448, 336319, 336320, 337656, 337657, 337827, 337828, 338360, 340200, 340994, 342957, 343786, 343787, 343788, 566618, 566619, 566620, 566621, 566622, 566623, 566624, 566625, 566626, 566627, 566628, 566629, 566630, 566631, 566632, 566633, 566634, 566635, 566636, 566637, 566638, 566639, 566640, 566641, 566642, 566643, 566644, 566645, 566646, 566647, 566648, 566649, 566650, 566651, 566652, 566653, 566654, 566655, 566656, 566657, 566658, 566659, 566660, 566661, 566662, 566663, 566664, 566935, 566936, 566937, 566938, 566939, 566940, 566941, 566942, 566943, 566944, 566945, 566946, 566947, 566948, 566949, 566950, 566951, 566952, 566953, 566954, 566955, 566956, 566957, 566958, 566959, 566960, 566961, 566962, 566963, 566964, 566965, 566966, 566967, 566968, 566969, 566970, 566971, 566972, 566973, 566974, 566975, 566976, 566977, 566978, 566979, 566980, 566981, 566982, 566983, 566984			
Pickle Lake – Duffell Lake	579696, 579697, 579698, 579699, 579700, 579701, 579702, 579703, 579704, 579705, 579706, 579707, 579708, 579709, 579710, 579711, 579712, 579713, 579714, 579715, 579716, 579717, 579718, 579719, 579720, 579721, 579722, 579723, 579724, 579725, 579726, 579727, 579728, 579729, 579730, 579731, 579732, 579733, 579734, 579735, 579736, 579737, 579738, 579739, 579740, 579741, 579742, 579743, 579744, 579745, 579746, 579747, 579748, 579749, 579750, 579751, 579752, 579753, 579754, 579755, 579756, 579757, 579758, 579759, 579760, 579761, 579762, 579763, 579764, 579765, 579766, 579767, 579768, 579769, 579993, 579994, 579995, 579996, 579999, 580000, 580001, 580002, 580003, 580011, 580012, 580013, 580014	Granted	Ontario, Canada	100%
Pickle Lake – Fry-McVean	581408, 581409, 581410, 581411, 581412, 581413, 581414, 581415, 581416, 581417, 581418, 581419, 581420, 581421, 581422, 581423, 581424, 581425, 581426, 581427, 581428, 581429, 581430, 581431, 581432, 581433, 581434, 581435, 581436, 581437, 581438, 581439, 581440, 581441, 581442, 581443, 581444, 581445, 581446, 581447, 581448, 581449, 581450, 581451, 581452, 581453, 581454, 581455, 581456, 581457, 581458, 581459, 581460, 581461, 581462, 581463, 581464, 581465, 581466, 581467, 581468, 581469, 581470, 581471, 581472, 581473, 581474, 581475, 581476, 581477, 581478, 581479, 581480, 581481, 581482, 581483, 581484, 581485, 581486, 581487, 581488, 581489, 581490, 581491, 581492, 581493, 581494, 581495, 581496, 581497, 581498, 581499, 581500, 581501, 581502, 581503, 581504, 581505, 581506, 581507, 581508, 581509, 581510, 581511, 581512, 581513, 581514, 581515, 581516, 581517, 581518, 581519, 581520, 581521, 581522, 581523, 581524, 581525, 581526, 581527, 581528, 581529, 581530, 581531, 581532, 581533, 581534, 581535,	Granted	Ontario, Canada	100%



**ARDIDEN**

Gold Projects	Tenement Number/Claim ID	Status	Location	Beneficial Percentage Interest
	581536, 581537, 581538, 581539, 581540, 581541, 581542, 581543, 581544, 581545, 581546, 581547, 581548, 581549, 581550, 581551, 581552, 581553, 581554, 581555, 581556, 581557, 581558, 581559, 581560, 581561, 581562, 581563, 581564, 581565, 581566, 581567, 581568, 581569, 581570, 581571, 581572, 581573, 581574, 581575, 581576, 581577, 581578, 581579, 581580, 581581, 581582, 581583, 581584, 581585, 581586, 581587, 581588, 581589, 581590, 581591, 581592, 581593, 581594, 581595, 581596, 581597, 581598, 581599, 581600, 581601, 581602, 581603, 581604, 581605, 581606, 581607, 581608, 581609, 581610, 581611, 581612, 581613, 581614, 581615, 581616, 581617, 581618, 581619, 581620, 581621, 581622, 581623, 581624, 581625, 581626, 581627, 581628, 581629, 581630, 581631, 581632, 581633, 581634, 581635, 581636, 581637, 581638, 581639, 581640, 581641, 581642, 581643, 581644, 581645, 581646, 581647, 581648, 581649, 581650, 581651, 581652, 581653, 581654, 581655, 581656, 581657, 581658, 581659, 581660, 581661, 581662, 581663, 581664, 581665, 581666, 581667, 581668, 581669, 581670, 581671, 581672, 581673, 581674, 581675, 581676, 581677, 581678, 581679, 581680, 581681, 581682, 581683, 581684, 581685, 581686, 581687, 581688, 581689, 581690, 581691, 581692, 581693, 581694, 581695, 581696, 581697, 581698, 581699, 581700, 581701, 581702, 581703, 581704, 581705, 581706, 581707, 581726, 581727, 581728, 581729, 581730, 581731, 581732, 581733, 581734, 581735, 581736, 581737, 581738, 581739, 581740, 581741, 581742, 581743, 581744, 581745, 581746, 581747, 581748, 581749, 581750, 581751, 581752, 581753, 581754, 581755, 581756, 581757, 581758, 581759, 581760, 581761, 581762, 581763, 581764, 581765, 581766, 581767, 581768, 581769, 581770, 581771, 581772, 581773, 581774, 581775, 581779, 581780, 581781, 581782, 581783, 581784, 581785, 581786, 581787, 581788, 581789, 581790, 581791, 581792, 581793, 581794, 581795, 581796, 581797, 581798, 581799, 581800, 581801, 581802, 581803, 581804, 581805, 581806, 581807, 581808, 581809, 581810, 581811, 581812, 581813, 581814, 581815, 581816, 581817, 581818, 581819, 581820, 581821, 581822, 581823, 581824, 581825, 581826, 581827, 581828, 581830, 581831, 581832, 581833, 581834, 581835, 581836, 581837, 581838, 581839, 581840, 581841, 581842, 581843, 581844, 581845, 581846, 581847, 581848, 581849, 581850, 581851, 581852, 581853, 581854, 581855, 581856, 581857, 581858, 581859, 581860, 581861, 581862, 581863, 581864, 581865, 581866, 581867, 581868, 581869, 581870, 581871, 581872, 581873, 581874, 581875, 581876, 581877, 581878, 581879, 581880, 581881, 581882, 581883, 581884, 581885, 581886, 581887, 581888, 581889, 581890, 581891, 581892, 581893, 581894, 581895, 581896, 581897, 581898, 581899, 581900, 581901, 581902, 581903, 581904, 581905, 581906, 581907, 581908, 581909, 581910, 581911, 581912, 581913, 581914, 581915, 581916, 581917, 581918, 581919, 581920, 581921, 581922, 581923, 581924, 581925, 581926, 581927, 581928, 581929, 581930, 581931, 581932, 581933, 581934, 581935, 581936, 581937, 581938, 581939, 581940, 581941, 581942, 581943, 581944, 581945, 581946, 581947, 581948, 581949, 581950, 581951, 581952, 581953, 581954, 581955, 581956, 581957, 581958, 581959, 581960, 581961, 581962, 581963, 581964, 581965, 581966, 581967, 581968, 581969, 581970, 581971, 581972, 581973, 581974, 581975, 581976, 581977, 581978, 581979, 581981, 581982, 581983, 581984, 581985, 581986, 581987, 581988, 581989, 581990,			





**ARDIDEN**

Gold Projects	Tenement Number/Claim ID	Status	Location	Beneficial Percentage Interest
	581991, 581992, 581993, 581994, 581995, 581996, 581997, 581998, 581999, 582000, 582001, 582002, 582003, 582004, 582005, 582006, 582007, 582008, 582009, 582010, 582011, 582012, 582013, 582014, 582015, 582016, 582017, 582018, 582019, 582020, 582021, 582022, 582023, 582024, 582025, 582026, 582027, 582028, 582029, 582030, 582031, 582032, 582033, 582034, 582035, 582036, 582037, 582038, 582039, 582040, 582041, 582042, 582043, 582044, 582045, 582046, 582047, 582048, 582049, 582050, 582051, 582052, 582053, 582054, 582055, 582056, 582057, 582058, 582059, 582060, 582061, 582062, 582063, 582064, 582065, 582066, 582067, 582068, 582069, 582070, 582071, 582072, 582073, 582074, 582075, 582076, 582077, 582078, 582079, 582080, 582081, 582082, 582083, 582084, 582085, 582086, 582087, 582088, 582089, 582090, 582091, 582092, 582093, 582094, 582095, 582096, 582097, 582098, 582099, 582100, 582101, 582102, 582103, 582104, 582105, 582106, 582107, 582108, 582109, 582110, 582111, 582112, 582113, 582114, 582115, 582116, 582117, 582118, 582119, 582120, 582121, 582122, 582123, 582124, 582125, 582126, 582127, 582128, 582129, 582130, 582131, 582132, 582133, 582134, 582135, 582136, 582137, 582138, 582139, 582140, 582141, 582142, 582143, 582144, 582145, 582146, 582147, 582148, 582149, 582150, 582151, 582152, 582153, 582154, 582155, 582156, 582157, 582158, 582159, 582160, 582161, 582162, 582163, 582164, 582165, 582166, 582167, 582168, 582169, 582170, 582171, 582172, 582173, 582174, 582175, 582176, 582177, 582178, 582179, 582180, 582181, 582182, 582183, 582184, 582185, 582186, 582187, 582188, 582189, 582190, 582191, 582192, 582193, 582194, 582195, 582196, 582197, 582198, 582199, 582200, 582201, 582202, 582203, 582204, 582205, 582206, 582207, 582208, 582209, 582210, 582211, 582212, 582213, 582214, 582215, 582216, 582217, 582218, 582219, 582220, 582221, 582222, 582223, 582224, 582225, 582226, 582227, 582228, 582229, 582230, 582231, 582232			
Pickle Lake – Jean Lake	574692, 574693, 574694, 574695, 574696, 574697, 574698, 574699, 574700, 574701, 574702, 574703, 574704, 574705, 574706, 574707, 574708, 574709, 574710, 574711, 574712, 574713, 574714, 574715, 574716, 574717, 574718, 574719, 574720, 574721, 574730, 574734, 574735, 574736, 574737, 574738, 574739, 574740, 574741, 574792, 574793, 574794, 574795, 574796, 574797, 574798, 574799, 574800, 574801, 574802, 574803, 574804, 574805, 574806, 574807, 574808, 574809, 574810, 574811, 574812, 574813, 574814, 574815, 574816, 574817, 574818, 574819, 574820, 574821, 574822, 574823, 574824, 574825, 574826, 574827, 574828, 574829, 574830, 574831, 574832, 574833, 574834, 574835, 574836, 574837, 574838, 574839, 574840, 574841, 574864, 574865, 574866, 574867, 574868, 574869, 574870	Granted	Ontario, Canada	100%
Pickle Lake – Kasagiminnis	107775, 110169, 122181, 122182, 122183, 122898, 122899, 124715, 124716, 124717, 133631, 136219, 136220, 136221, 141049, 142242, 178845, 178846, 181427, 186270, 187592, 188198, 198429, 198430, 199793, 200883, 236848, 236849, 253606, 253607, 254414, 265109, 266397, 281542, 282778, 289590, 290904, 290905, 292065, 292066, 301653, 310309, 310310, 310311, 310962, 319583, 340456, 341762, 341763	Granted	Ontario, Canada	100%
Pickle Lake – Kawashe Lake	574871, 574872, 574873, 574874, 574875, 574876, 574877, 574878, 574879, 574880, 574881, 574882, 574883, 574884, 574885, 574886, 574887, 574888, 574889, 574890, 574891, 574892, 574893, 574894, 574895, 574896, 574897, 574898, 574899, 574900, 574901, 574902,	Granted	Ontario, Canada	100%



**ARDIDEN**

Gold Projects	Tenement Number/Claim ID	Status	Location	Beneficial Percentage Interest
	574903, 574904, 574905, 574906, 574907, 574908, 574909, 574910, 574911, 574912, 574913, 574914, 574915, 574916, 574917, 574918, 574919, 574920, 574921, 574922, 574923, 574924, 574925, 574926, 574927, 574928, 574929, 574930, 574931, 574932, 574933, 574934, 574935, 574936, 574937, 574938, 574939, 574940, 574941, 574942, 574943, 574944, 574945, 574946, 574947, 574948, 574949, 574950, 574951, 574952, 574953, 574954, 574955, 574956, 574957, 574958, 574959, 574960, 574961, 574962, 574963, 574964, 574965, 574966, 574967, 574968, 574969, 574970, 574971, 574972, 574973, 574974, 574975, 574976, 574977, 574978, 574979, 574980, 574981, 574982, 574983, 574984, 574985, 574986, 574987, 574988, 574989, 574990, 574991, 574992, 574993, 574994, 574995, 574996, 574997, 574998, 574999, 575000, 575001, 575002, 575003, 575004, 575005, 575006, 575007, 575008, 575009, 575010, 575011, 575012, 575013, 575014, 575015, 575016, 575017, 575018, 575019, 575020, 575021, 575022, 575023, 575024, 575025, 575026, 575027, 575028, 575029, 575030, 575031, 575032, 575033, 575034, 575035, 575036, 575037, 575038, 575039, 575040, 575041, 575042, 575043, 575044, 575045, 575046, 575047, 575048, 575049, 575050, 575051, 575052, 575053, 575054, 575055, 575056, 575057, 575058, 575059, 575060, 575061, 575062, 575063, 575064, 575065, 575066, 575067, 575068, 575069, 575070, 575071, 575072, 575073, 575074, 575075, 575076, 575077, 575078, 575079, 575080, 575081, 575082, 575083, 575084, 575085, 575086, 575087, 575088, 575089, 575090, 575091, 575092, 575093, 575094, 575095, 575096, 575097, 575098, 575099, 575100, 575101, 575102, 575103, 575104, 575105, 575106, 575107, 575108, 575109, 575110, 575111, 575112, 575113, 575114, 575115, 575116, 575117, 575118, 575119, 575120, 575121, 575122, 575123, 575124, 575125, 575126, 575127, 575128, 575129, 575130, 575131, 575132, 575133, 575134, 575135, 575136, 575137, 575138, 575139, 575140, 575141, 575142, 575143, 575144, 575145, 575146, 575147, 575148, 575149, 575150, 575151, 575152, 575153, 575154, 575155, 575156, 575157, 575158, 575159, 575160, 575161, 575162, 575163, 575164, 575165, 575166, 575167, 575168, 575169, 575170, 575171, 575172, 575173, 575174, 575175, 575176, 575177, 575178, 575179, 575180, 575181, 575182, 575183, 575184, 575185, 575186, 575187, 575188, 575189, 575190, 575191, 575192, 575193, 575194, 575195, 575196, 575197, 575198			
Pickle Lake – Keating Lake	574492, 574493, 574494, 574495, 574496, 574497, 574498, 574499, 574500, 574501, 574502, 574503, 574504, 574505, 574506, 574507, 574508, 574509, 574510, 574511, 574512, 574513, 574514, 574515, 574516, 574517, 574518, 574519, 574520, 574521, 574522, 574523, 574524, 574525, 574526, 574527, 574528, 574529, 574530, 574531, 574532, 574533, 574534, 574535, 574536, 574537, 574538, 574539, 574540, 574541, 574542, 574543, 574544, 574545, 574546, 574547, 574548, 574549, 574550, 574551, 574552, 574553, 574554, 574555, 574556, 574557, 574558, 574559, 574560, 574561, 574562, 574563, 574564, 574565, 574566, 574567, 574568, 574569, 574570, 574571, 574572, 574573, 574574, 574575, 574576, 574577, 574578, 574579, 574580, 574581, 574582, 574583, 574584, 574585, 574586, 574587, 574588, 574589, 574590, 574591, 574722, 574723, 574724, 574725, 574726, 574727, 574728, 574729, 574731, 574732, 574733, 579929, 579930, 579931, 579932, 579933, 579934, 579935, 579936, 579937, 579938, 579939, 579940, 579941, 579942, 579943, 579944, 579945, 579946, 579947, 579948, 579949, 579950, 579951, 579952, 579953,	Granted	Ontario, Canada	100%



**ARDIDEN**

Gold Projects	Tenement Number/Claim ID	Status	Location	Beneficial Percentage Interest
	579954, 579955, 579956, 579957, 579958, 579959, 579960, 579961, 579962, 579963, 579964, 579965, 579966, 579967, 579968, 579969, 579970, 579971, 579972, 579973, 579974, 579975, 579976, 579977, 579978			
Pickle Lake – Meen Lake	579775, 579776, 579777, 579778, 579779, 579780, 579781, 579782, 579783, 579784, 579785, 579786, 579787, 579788, 579789, 579790, 579791, 579792, 579793, 579794, 579795, 579796, 579797, 579798, 579799, 579800, 579801, 579802, 579803, 579804, 579805, 579806, 579807, 579808, 579809, 579810, 579811, 579812, 579813, 579814, 579815, 579816, 579817, 579818, 579819, 579820, 579821, 579822, 579823, 579824, 579825, 579826, 579827, 579828, 579829, 579830, 579831, 579832, 579833, 579834, 579835, 579836, 579837, 579838, 579839, 579840, 579841, 579842, 579843, 579844, 579845, 579846, 579847, 579848, 579849, 579850, 579851, 579852, 579853, 579854, 579855, 579856, 579857, 579858, 579859, 579860, 579861, 579862, 579863, 579864, 579865, 579866, 579867, 579868, 579869, 579870, 579871, 579872, 579873, 579874, 579875, 579876, 579877, 579878, 579879, 579880, 579881, 579882, 579883, 579884, 579885, 579886, 579887, 579888, 579889, 579890, 579891, 579892, 579893, 579894, 579895, 579896, 579897, 579898, 579899, 579900, 579901, 579902, 579903, 579904, 579905, 579906, 579907, 579908, 579909, 579910, 579911, 579912, 579913, 579914, 579915, 579916, 579917, 579918, 579919, 579920, 579921, 579922, 579923, 579924, 579925, 579926, 579927, 579928	Granted	Ontario, Canada	100%
Pickle Lake – New Patricia	131784, 147867, 147868, 147869, 147870, 147871, 159805, 161958, 184465, 193806, 196500, 211821, 214522, 214523, 214524, 240460, 248516, 248517, 248518, 248519, 251221, 260527, 300387, 315009, 315010, 315011, 317709, 329913, 329914, 329915, 329916, 335930, 339299, 500919, 500920, 500921, 500922, 500923, 500924, 500925, 500926, 500927, 500928, 500929, 500930, 500931, 500932, 500933, 500934, 500935, 500936, 500937, 500938, 500939, 500940, 500941, 500942, 500943, 500944, 500945, 500946, 500947, 500948, 500949, 500950, 500951, 500952, 500953, 500954, 500955, 500956, 500957, 500958, 500959, 500960, 500961, 500962, 500963, 500964, 500965, 500966, 500967, 500968, 500969, 500970, 500971, 500972, 500973, 500974, 500975, 500976, 500977, 500978, 500979, 500980, 500981, 500982, 500983, 500984, 500985, 500986, 500987, 500988, 500989, 500990, 500991, 500992, 500993, 500994, 500995, 500996, 500997, 500998, 500999, 501000, 501001, 501002, 501003, 501004, 501005, 501006, 501007, 501008, 501009, 501010, 501011, 501012, 501013, 501014, 501015, 501016, 501017, 501018, 501142, 501143, 501144, 501145, 501146, 501147, 501148, 501149, 501150, 501151, 501152, 501153, 501154, 501155, 501156, 501157, 501158, 501159, 501160, 501161, 501162, 501163, 501164, 501165, 501166, 501167, 501168, 501169, 501170, 501171, 501172, 501173, 501174, 501175, 501176, 501177, 501178, 501179, 501180, 501181, 501182, 501183, 501184, 501185, 501186, 501187, 501188, 501189, 501190, 501191, 501210, 501211, 501212, 501213, 501214, 501215, 501216, 501217, 501218, 501219, 501220, 501221, 501222, 501223, 501224, 501225, 501226, 501227, 501228, 501229, 501230, 501231, 501232, 501233, 501234, 501235, 501236, 501237, 501238, 501239, 501240, 501241, 501242, 501243, 501244, 501245, 501246, 501247, 501248, 501249, 501250, 501251, 501252, 501253, 501254, 501255, 501256, 501257, 501258, 501259, 501292, 501293, 501294, 501295, 501296, 501297, 501298,	Optioned	Ontario, Canada	Right to Earn 100%



**ARDIDEN**

Gold Projects	Tenement Number/Claim ID	Status	Location	Beneficial Percentage Interest
	501299, 501300, 501301, 501302, 501303, 501304, 501305, 501306, 501307, 501308, 501309, 501310, 501311, 501312, 501313, 501314, 501315, 501316, 501317, 501318, 501319, 501320, 501321, 501322, 501323, 501324, 501325, 501326, 501327, 501328, 501329, 501330, 501331, 501332, 501333, 501339, 501340, 501341, 501342, 501343, 501344, 501345, 501346, 501347, 501348, 501349, 501350, 501351, 501352, 501353, 501354, 501355, 501356, 501357, 501358, 501359, 501360, 501361, 501362, 501363, 501364, 501365, 501366, 501367, 501368, 501369, 501370, 501371, 501372, 501373, 501374, 501375, 501376, 501377, 501378, 501379, 501380, 501381, 501382, 501383, 501384, 501385, 501386, 501387, 501388, 501527, 501528, 501529, 501530, 501531, 501532, 501533, 501534, 501535, 501536, 501537, 501538, 501539, 501540, 501541, 501542, 501543, 501544, 501545, 501546, 501547, 501548, 501549, 501550, 501551, 501552, 501568, 501569, 501570, 501571, 501572, 501573, 501574, 501575, 501576, 501577, 501578, 501579, 501580, 501581, 501582, 501583, 501584, 501585, 501586, 501587, 501588, 501589, 501590, 501591, 501592, 501593, 501594, 501595, 501596, 501597, 501598, 501599, 501600, 501601, 501602, 501603, 501604, 501605, 501606, 501607, 501608, 501609, 501610, 501611, 501612, 501613, 501614, 501615, 501616, 501617, 501814, 501815, 501816, 501817, 501818, 501819, 501820, 501821, 501822, 501823, 501824, 501825, 501826, 501827, 501828, 501829, 501830, 501831, 501832, 501833, 501834, 501835, 501836, 501837, 501838, 501839, 501840, 501841, 501842, 501843, 501844, 501845, 501846, 501847, 501848, 501849, 501850, 501851, 501852, 501853, 501854, 501855, 501856, 501857, 501858, 501859, 501860, 501861, 501862, 501863, 502011, 502012, 502013, 502014, 502015, 502016, 502017, 502018, 502019, 502020, 502021, 502022, 502023, 502024, 502025, 502026, 502027, 502028, 502029, 502030, 502031, 502032, 502033, 502034, 502035, 502036, 502037, 502038, 502039, 502040, 502041, 502042, 502043, 502044, 502045, 502046, 502047, 502048, 502049, 502050, 502051, 502052, 502053, 502054, 502055, 502056, 502057, 502058, 502059, 502060, 502132, 502133, 502134, 502135, 502136, 502137, 502138, 502139, 502140, 502141, 502142, 502143, 502144, 502145, 502146, 502147, 502148, 502149, 502150, 502151, 502152, 502153, 502154, 502155, 502156, 502157, 502158, 502159, 502160, 502161, 502162, 502163, 502164, 502165, 502166, 502167, 502168, 502169, 502170, 502171, 502172, 502173, 502174, 502175, 502176, 502177, 502178, 502179, 502180, 502181, 502227, 502229, 502231, 502232, 502234, 502236, 502238, 502240, 502241, 502243, 502245, 520337, 520338, 520339, 520340, 520935, 520936, 520937, 520938, 520939, 520940, 520941, 520942, 520943, 520944, 520945, 520946, 520947, 520948, 520949, 520950, 520951, 520952, 520953, 520954, 520955, 520956, 520957, 520958, 520959, 520960, 520961, 520962, 520963, 520964, 520965, 520966, 520967, 520968, 520969, 520970, 520971, 520972, 520973, 520974, 520975, 520976, 520977, 520978, 520979, 520980, 520981, 520982, 520983, 520984, 520985, 520986, 520987, 520988, 520989, 520990, 520991, 520992, 520993, 520994, 520995, 520996, 520997, 520998, 520999, 521000, 521001, 521002, 521003, 521004, 521005, 521006, 521007, 521008, 521009, 521010, 521011, 521012, 521013, 521014, 521015, 521016, 521017, 521018, 521019, 521020, 521021, 521022, 521023, 521024, 521025, 521026, 521027, 521028, 521029, 521030, 521031, 521032,			



**ARDIDEN**

Gold Projects	Tenement Number/Claim ID	Status	Location	Beneficial Percentage Interest
	521033, 521034, 521035, 521036, 521037, 521038, 521039, 521040, 521041, 521042, 521043, 521044, 521045, 521046			
Pickle Lake – Reylea Lake	580157, 580158, 580159, 580160, 580161, 580162, 580163, 580164, 580165, 580166, 580167, 580168, 580169, 580170, 580171, 580172, 580173, 580174, 580175, 580176, 580177, 580178, 580179, 580180, 580181, 580182, 580183, 580184, 580185, 580186, 580187, 580188, 580191, 580192, 580193, 580194, 580195, 580196, 580197, 580198, 580199, 580200, 580201, 580202, 580203, 580204, 580205, 580206, 580207, 580208, 580209, 580210, 580211, 580212, 580213, 580214, 580215, 580216, 580217, 580218, 580219, 580220, 580221, 580222, 580223, 580224, 580225, 580226, 580227, 580228, 580229, 580230, 580231, 580232, 580233, 580234, 580235, 580236, 580237, 580238, 580239, 580240, 580241, 580242, 580243, 580244, 580245, 580246, 580247, 580248, 580249, 580250, 580251, 580252, 580253, 580254, 580255, 580256, 580257, 580258, 580259, 580260, 580261, 580262, 580263, 580264, 580265, 580266, 580267, 580268, 580269, 580270, 580271, 580272, 580273, 580274, 580275, 580276, 580277, 580278, 580279, 580280, 580281, 580282, 580283, 580284, 580285, 580286, 580287, 580288, 580289, 580290, 580291, 580292, 580293, 580294	Granted	Ontario, Canada	100%
Pickle Lake – South Limb	100831, 101396, 101525, 101526, 102692, 102906, 116721, 118004, 118221, 121656, 121657, 125050, 125051, 125052, 125053, 125760, 125761, 125762, 129676, 160810, 164956, 166176, 166304, 166305, 169680, 169681, 173060, 178291, 178314, 178995, 178996, 178997, 179657, 189146, 189147, 189148, 194187, 194210, 194211, 194935, 194936, 194937, 195563, 218371, 219081, 224876, 225586, 225587, 225588, 226523, 226524, 226525, 227088, 231687, 232868, 260845, 262197, 262198, 265588, 266276, 266277, 266278, 268320, 268321, 268322, 273549, 273550, 281607, 282260, 282261, 285637, 285770, 289638, 289639, 293068, 293069, 293146, 293147, 297669, 297670, 321676, 321677, 322315, 328186, 328833, 328834, 328835, 341207, 341208, 535546, 535547, 535548, 535549, 535550, 535551, 535552, 535553, 535554, 535555, 535556, 535557, 551427, 562023, 562024, 562025, 562026	Granted	Ontario, Canada	100%
Pickle Lake – Two Fifty	541335, 541338, 541339, 541340, 541342, 541343, 541347, 541348, 541349, 541351, 541352, 541353, 541354, 541356, 541357, 541362, 541363, 541364, 541365, 541367, 541368, 541369, 541370, 541371, 541372, 541373, 541374, 541376, 541377, 541378, 541379, 541380, 541381, 541382, 541383, 541384, 541385, 541387, 541388, 541389, 541390, 541391, 541392, 541393, 541394, 541395, 541396, 541397, 541398, 541399, 541400, 541401, 562623, 562624, 562625, 562626, 562627, 562628, 562629, 562630, 562631, 562632, 562633, 562634, 562635, 562637, 562638, 562639, 562640, 562641, 562642, 562643, 562644, 562645, 562646, 562647	Granted	Ontario, Canada	100%
Pickle Lake – West Pickle	104760, 104916, 104917, 104918, 104919, 104920, 105656, 105657, 120067, 120068, 126563, 128549, 128550, 138039, 139349, 147534, 147535, 147536, 155122, 155325, 165265, 171104, 171105, 171106, 171107, 173237, 173238, 176769, 184045, 187800, 191356, 191357, 199313, 199314, 199962, 207329, 227360, 227361, 236415, 239988, 248070, 248771, 248772, 250862, 256698, 256699, 266552, 267218, 267219, 273313, 285880, 285881, 287193, 293994, 295326, 295992, 300139, 303169, 306594, 316767, 316768, 320515, 323119, 325091, 325092, 333749, 333750, 333751, 335552, 336241, 336242, 338336, 345540, 345541, 345542, 345543, 541375, 541386	Granted	Ontario, Canada	100%



**ARDIDEN**

Lithium Projects	Tenement Number/Claim ID	Status	Location	Beneficial Percentage Interest
Root Bay	101422, 101696, 117902, 121020, 121020, 121042, 122349, 122350, 122351, 122351, 124441, 152951, 160964, 160965, 160966, 166199, 169575, 179044, 179045, 182367, 194973, 196921, 214118, 214119, 217760, 225637, 225637, 225638, 233675, 261574, 262879, 269563, 269564, 269564, 272959, 281639, 281640, 285014, 290289, 290289, 290290, 290290, 298950, 321059, 321565, 328205, 328206, 328225, 328226, 329530, 329531, 340566, 340566, 340588, 340589, 341368, 341368, 341369, 341370	Granted	Ontario, Canada	100%
Root Lake	553204, 553205, 553206, 553207, 553208, 553209, 553210, 553211, 553212, 553213, 553214, 553215, 553216, 553217, 553218, 101503, 101504, 116836, 121133, 121134, 160180, 160180, 160270, 166201, 166202, 166203, 166284, 179021, 214121, 214122, 214123, 214216, 214217, 214218, 232916, 232916, 232917, 232917, 232988, 232989, 269553, 269630, 282239, 289614, 298925, 298925, 298926, 298926, 298927, 298947, 298947, 298948, 328813, 340586, 340587, 340676	Granted	Ontario, Canada	100%
Seymour Lake	305606, 305606, 312405, 312405, 110794, 257034, 202394, 269391, 239142, 199576, 209207, 209206, 102009, 103639, 108167, 109057, 109058, 109882, 109882, 109882, 109883, 109884, 110535, 110795, 110795, 110795, 110796, 110796, 111208, 111208, 111240, 111512, 112597, 114199, 114200, 115999, 115999, 116000, 116000, 116001, 118922, 118922, 120826, 120826, 122538, 122538, 123189, 123189, 125514, 126089, 126089, 126089, 126090, 128849, 130705, 130706, 132743, 132743, 132743, 134452, 137057, 137595, 137595, 139233, 139233, 140447, 140448, 142382, 142382, 142383, 142384, 143993, 144333, 144333, 145302, 146398, 147129, 147129, 147130, 147644, 147644, 147645, 147645, 149178, 149204, 150834, 150834, 150834, 152639, 152695, 152695, 154018, 154018, 157231, 157231, 158455, 158455, 158455, 158456, 158595, 158595, 158595, 158701, 158702, 158739, 158739, 159350, 161036, 161036, 161036, 161037, 161037, 161227, 161228, 161676, 161676, 161676, 164044, 164290, 164290, 164291, 164291, 164672, 165944, 166147, 167316, 167331, 167331, 167714, 167714, 171277, 174901, 174901, 176401, 176401, 176401, 177476, 177476, 177615, 182257, 182257, 182794, 182795, 182795, 182795, 182796, 182796, 182796, 183014, 183611, 183611, 183612, 183612, 184741, 184741, 184742, 184742, 186421, 186421, 186421, 186458, 186458, 186459, 186558, 186558, 186683, 186683, 186849, 186850, 186850, 186850, 189693, 189693, 190097, 190097, 190098, 190099, 191608, 192878, 192879, 192879, 193064, 193065, 195436, 196429, 196429, 197307, 197308, 199575, 201118, 201239, 202392, 202392, 202392, 202393, 202393, 204013, 206643, 209269, 210680, 210717, 211639, 211639, 212521, 213762, 213972, 216046, 216480, 216480, 216480, 216480, 219380, 219487, 219487, 224207, 224208, 226787, 226788, 226788, 228166, 228166, 228166, 230975, 230976, 232543, 232543, 232544, 233869, 233869, 233870, 233870, 233871, 233871, 234515, 234515, 234658, 234658, 237862, 238118, 238118, 238343, 238343, 238343, 239069, 239069, 239197, 239197, 244708, 244708, 246792, 246792, 247152, 247930, 247931, 250469, 250469, 252479, 252530, 252702, 252702, 252702, 252703, 252704, 252704, 252704, 252705, 252705, 252705, 252705, 255760, 255900, 256854, 257033, 257033, 257033, 257911, 257911, 257911, 257911, 259408, 259409, 261948, 264527, 264527, 264569, 264570, 265918, 265918, 268004, 270371, 270371, 270371, 270371, 270372, 270372, 271256, 271256, 271302, 271759, 275234, 276648, 277335, 277335, 278196, 278197, 280559, 280560, 280561, 280561, 282491, 282491, 282491, 282661, 282662, 285387, 289913, 289913, 289913, 289914, 290555, 290713, 292949, 292949, 293546, 293546, 297013, 297013, 302513, 304354, 306092, 306092, 306359, 306359, 306504, 307057, 312238, 312772, 312773,	Granted	Ontario, Canada	100%



**ARDIDEN**

Lithium Projects	Tenement Number/Claim ID	Status	Location	Beneficial Percentage Interest
	312836, 312836, 313281, 313660, 313660, 313661, 313661, 313805, 313806, 313806, 313807, 313807, 313967, 316941, 317425, 317425, 317425, 318517, 322021, 325851, 326498, 326498, 326802, 327346, 327347, 328430, 328430, 329159, 329160, 331205, 331205, 331233, 332326, 332327, 336637, 337814, 337815, 338473, 338473, 338554, 339017, 339018, 341504, 341504, 341621, 342142, 342142, 342143, 342143, 343145, 343145, 343146, 343147, 343884, 343884, 344314, 344314, 344315, 518640, 518641, 518646, 518652, 518659, 518660, 518666, 518667, 518668, 518673, 518674, 518675, 518676, 518680, 518681, 518682, 518683, 518685, 518686, 519760, 519761, 519762, 519763, 519764, 519765, 519766, 519767, 519768, 519769, 519770, 519771, 519772, 519773, 519774, 519775, 519776, 519777, 519778, 519779, 519780, 519781, 519782, 519783, 519784, 519785, 519786, 519787, 519788, 519789, 519790, 519791, 519792, 519793, 519794, 519795, 519796, 519797, 519798, 519803, 519804, 519805, 519806, 519807, 519808, 519809, 519810, 519811, 519812, 519813, 519814, 519815, 519816, 519817, 519818, 519819, 519820, 519821, 519822, 519823, 519824, 519825, 519826, 519827, 519828, 519829, 519830, 519831, 519832, 519833, 519834, 519835, 519836, 519837, 519838, 519839, 519840, 519841, 519842, 519843, 519844, 519845, 519846, 519847, 519848, 519849, 519850, 519851, 519852, 519853, 519854, 519855, 519856, 519857, 519858, 519859, 519860, 519861, 519862, 519863, 519864, 519865, 519866, 519867, 519868, 519869, 519870, 519871, 519872, 519873, 519874, 519875, 519876, 519877, 519878, 519879, 519880, 519881, 519882, 519883, 519884, 519885, 519886, 519887, 519888, 519889, 519890, 519891, 519892, 519893, 519894, 519895, 519896, 519897, 519898, 519899, 519900, 519901, 519902, 519903, 519904, 519905, 519906, 519907, 519908, 519909, 519910, 519911, 519912, 519913, 519914, 519915, 519916, 519917, 519918, 519919, 519920, 519921, 519922, 519923, 519924, 519925, 519926, 519927, 519928, 519929, 519930, 519935, 519936, 519937, 519938, 519939, 519940, 519941, 519942, 519943, 519944, 519945, 519946, 519947, 519948, 519949, 519950, 519951, 519952, 519953, 519954, 519955, 519956, 519957, 519958, 519959, 519960, 519961, 519962, 519963, 519964, 519965, 519966, 519967, 519968, 519969, 519970, 519971, 519972, 519973, 519974, 519975, 519976, 519977, 519978, 519979, 519980, 519981, 519982, 519983, 519984, 519985, 519986, 519987, 519988, 519989, 519990, 519991, 519992, 519993, 519994, 519995, 519996, 519997, 519998, 519999, 520000, 520001, 520002, 520003, 520004, 520005, 520006, 520007, 520008, 520009, 520010, 520011, 520012, 520013, 520014, 520015, 520016, 520017, 520018, 520019, 520020, 520021, 520022, 520023, 520024, 520025, 520026, 520027, 520028, 520029, 520030, 520031, 520032, 520033, 520034, 520035, 520036, 520037, 520038, 520039, 520040, 520041, 520042, 520043, 520044, 520045, 520046, 520047, 520048, 520049, 520050, 520051, 520052, 520053, 520054, 520055, 520056, 520057, 520058, 520059, 520060, 520061, 520062, 520063, 520064, 520065, 520066, 520067, 520068, 520069, 520070, 520071, 520072, 520073, 520074, 520075, 520076, 520077, 520078, 520079, 520080, 520081, 520082, 520083, 520084, 520085, 520086, 520087, 520088, 520089, 520090, 520091, 520092, 520093, 520094, 520095, 520096, 520097, 520098, 520099, 520100, 520101, 520102, 520103, 520104, 520105, 520106, 520107, 520108, 520109, 520110, 520111, 520112, 520113, 520114, 520115, 520116, 520117, 520118, 520119,			
Wisa Lake	113513, 131136, 131136, 145905, 159951, 176985, 176986, 183797, 195845, 195845, 212601, 212614, 213853, 213854, 224167, 224168, 230802, 243004, 250542, 262540, 262540, 269309, 269310, 307936,	Granted	Ontario, Canada	100%



**ARDIDEN**

Lithium Projects	Tenement Number/Claim ID	Status	Location	Beneficial Percentage Interest
	308449, 308450, 317062, 327963, 329248, 329248, 338625, 103529, 103529, 118801, 118801, 118802, 133592, 133592, 150259, 161045, 167103, 167103, 178817, 198377, 215841, 215842, 215843, 234393, 244999, 246563, 246564, 252720, 252720, 253045, 253045, 253046, 271771, 271772, 281855, 281855, 281856, 282740, 282741, 289548, 289548, 301603, 301603, 329645, 103846, 118618, 118619, 119131, 119132, 119132, 119133, 129848, 157769, 157769, 164373, 177777, 177777, 177778, 177779, 193276, 193277, 223146, 231115, 231116, 231116, 231808, 243329, 297767, 338787, 635731, 635732, 635733, 635734, 635735, 635736, 635737, 635738, 635739, 635740, 635741, 635742, 635731, 635732, 635733, 635734, 635735, 635736, 635737, 635738, 635739, 635740, 635741, 635742			
Root Lake Patents	MLO-13011, MLO-13014, MLO-13016, PAT-51965, PAT-51966, PAT-51967, PAT-51968, PAT-51969, PAT-51970, PAT-51971, PAT-51972, PAT-51973, PAT-51974, PAT-51975, PAT-51976, PAT-51977, PAT-51978, PAT-51979, PAT-51980, PAT-51981, PAT-51982, PAT-51983, PAT-51984, PAT-51985, PAT-51986, PAT-51987, PAT-51988, PAT-51989, PAT-51990, PAT-51991, PAT-51992, PAT-51993, PAT-51994, PAT-51995, PAT-51996, PAT-51997	Granted	Ontario, Canada	100%

Graphite Projects	Tenement Number/Claim ID	Status	Location	Beneficial Percentage Interest
Manitouwadge	106808, 109041, 110086, 113625, 113626, 118723, 120303, 128662, 131666, 131972, 134369, 148355, 148356, 148357, 151037, 160975, 162102, 162103, 177448, 178748, 178749, 184310, 185993, 185994, 206507, 206508, 213679, 214769, 215274, 216286, 233311, 233312, 233313, 242045, 245488, 246007, 248870, 251308, 251595, 251596, 251597, 251598, 252658, 252659, 254326, 262718, 265818, 265819, 265820, 270688, 270689, 270690, 271714, 271715, 271716, 271717, 271718, 271719, 280111, 280112, 281804, 281805, 289867, 298697, 299651, 300011, 302379, 302380, 302381, 317648, 317649, 317650, 317651, 318725, 329071, 330634, 330635, 332614, 338507, 338508, 338509	Granted	Ontario, Canada	100%

**2. Mining tenements acquired during the quarter and their location:**

Project	Tenement Number	Status	Location	Beneficial Percentage Interest
	Nil			

**3. Mining tenements disposed of during the quarter and their location:**

Project	Tenement Number	Status	Location	Comment
	Nil			