



SEPTEMBER 2020 QUARTERLY ACTIVITIES REPORT

HIGHLIGHTS

- Drilling commenced at the 100%-owned Kasagiminnis Gold Deposit
- Mines Department Permit and First Nation MOU attained for the 100%-owned South Limb Gold Prospect
- Detail airborne geophysics flown over the entire New Patricia Gold Prospect (earn-in)

CORPORATE

- Successful capital raise of AUD4.5m to accelerate gold exploration
- Attraction of institutional investors including 1832 Asset Management as Substantial Shareholder (8.2%)
- Safety measures enacted in response to the global Coronavirus (COVID-19) pandemic
- Cash balance as at 30 September 2020 of AUD4.12m

Gold explorer **Ardiden Limited** ('Ardiden' or 'the Company') (ASX: ADV) is pleased to report on Activities at its highly prospective Pickle Lake Gold Project in northwest Ontario, Canada. Ardiden has aggregated a District-Scale Gold tenement package across a 100km width at the eastern end of the Archean Uchi Geological Subprovince (*Figure 1*), which also hosts the 30Moz Red Lake gold mining centre.

Ardiden is accelerating exploration activities at its predominantly 100%-owned underexplored and highly prospective Pickle Lake Gold Project for Tier-1 scale Gold Deposits.

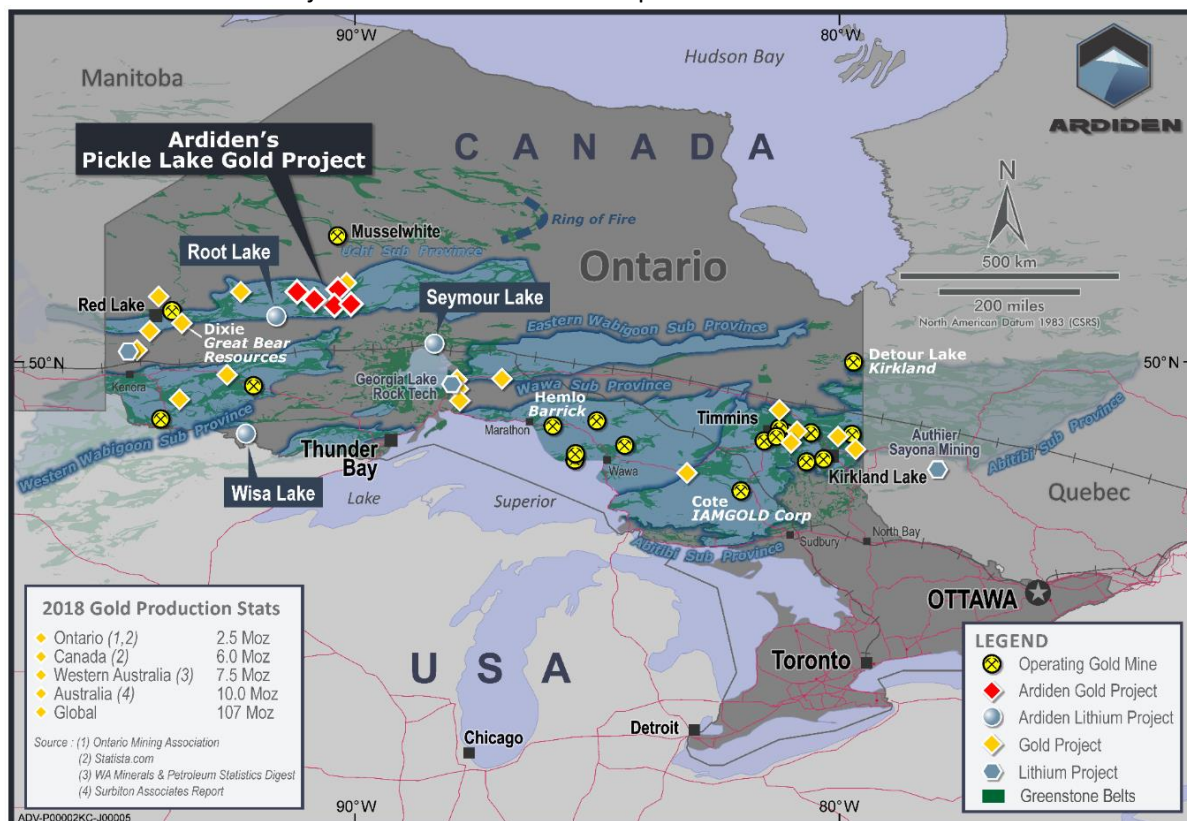


Figure 1- Ardiden's Pickle Lake Gold Project located in north-western Ontario, Canada



ARDIDEN

During the period, exploration work concentrated on 3 Gold Properties within the greater Pickle Lake Gold Project: **1) Kasagiminnis Gold Deposit; 2) South Limb Gold Prospect and 3) New Patricia Gold Prospect:**

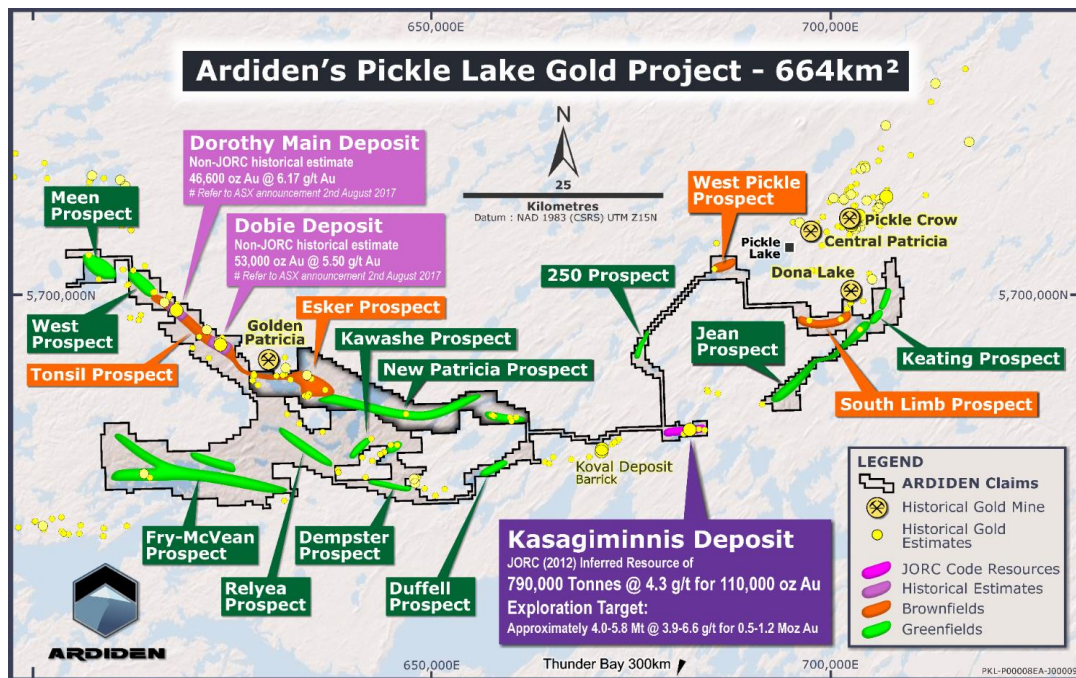


Figure 2- Ardiden's Gold pipeline of Projects

* The potential quantities and grades stated for the Exploration Target is conceptual in nature and there has been insufficient exploration to define Mineral Resources across the exploration target area. It is uncertain if further exploration of these targets will produce results that permit additional Mineral Resources to be estimated. *Non-JORC historical estimates (1987-1990) by original owners of the Dorothy and Dobie Deposits, were summarised in 2009 in an NI43-101 Technical Report on Gold Properties within the Pickle Lake area (Harron, 2009). The historical estimates are not reported in accordance with the JORC Code and a competent person has not done sufficient work to classify the historical estimates as mineral resources in accordance with the JORC Code. It is uncertain that following evaluation and further exploration work that the historical estimates will be able to be reported as mineral resources in accordance with the JORC Code.

1 - KASAGIMINNIS GOLD DEPOSIT - EXPLORATION DRILLING PROGRAM

Drilling commenced at Kasagiminnis with international drilling company, Major Drilling, in September 2020, targeting deeper and along-strike extensions of the existing 110,000oz Inferred JORC (2012) Resource at a grade of 4.3g/t Au. Of distinction, Kasagiminnis is 100%-owned by Ardiden and is a new discovery with no historical mining or exploitation of the *in-situ* gold resource.

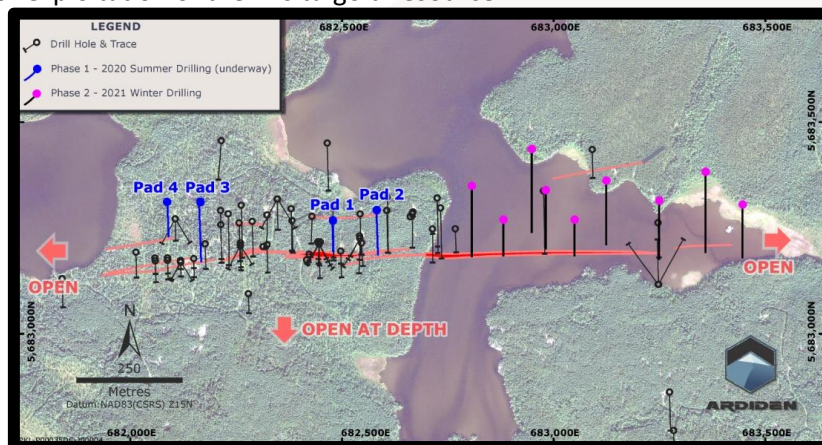


Figure 3- Drill Pad location at the Kasagiminnis Gold Deposit

Verified results of the first four holes are anticipated in the first week of November. Drilling has continued beyond the end of the reporting period and as at the release of this report, 10 holes for approximately 2,500m has been completed from four drill pads at Kasagiminnis (Figure 3). Drill core is logged and cut on site at Pickle Lake before being transported 330km south to the analytical laboratory in Thunder Bay.



ARDIDEN

To the end of September, four holes had been completed efficiently and with no incidents. Drilling intersected wide zones of alteration and associated sulphides with visible gold also noted in the very first hole (refer to ASX Announcement 3 September 2020).

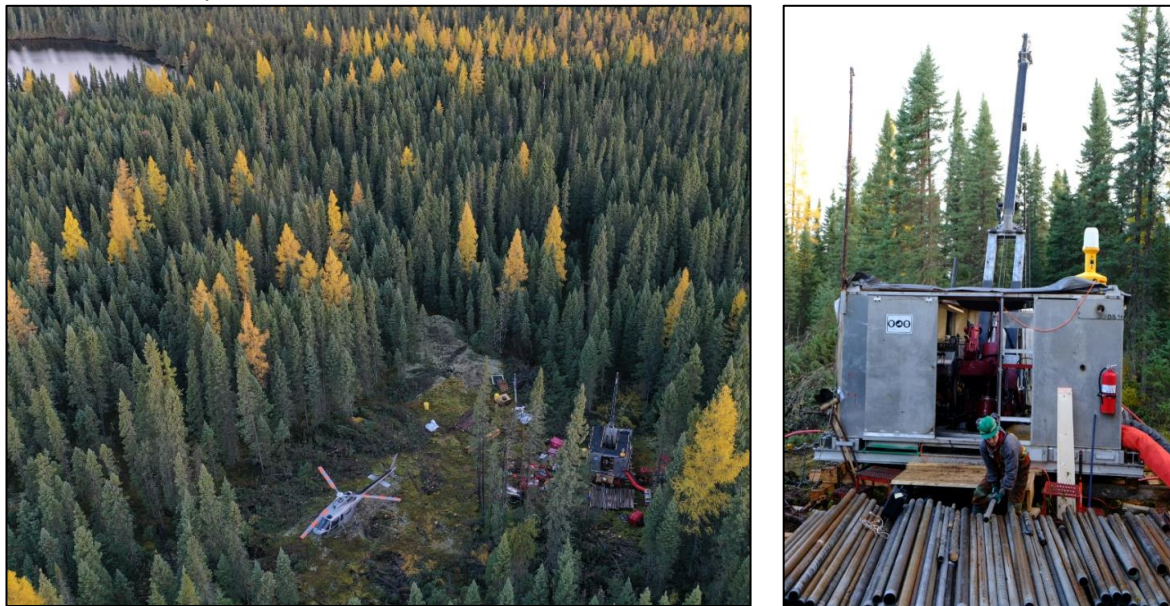


Figure 4- Drilling at Kasagiminnis Gold Deposit

Kasagiminnis is one of 19 identified gold deposits and prospects identified by Ardiden across its massive, connected landholding (refer to ASX Announcement 16 June 2020). The Company has estimated an Exploration Target* of 0.5 to 1.2 Moz gold at the Kasagiminnis Deposit over a 2km strike length and to 500m below surface (refer to ASX announcement 27 May 2020).

The Company is systematically lining-up its 18 other Gold Prospects and Deposits (Figure 2) to ensure a steady pipeline of gold targets across its district-scale 664km² Pickle Lake Gold Project. The Company will be progressively undertaking exploration work at its other Prospects as First Nation and Mines Department agreements are secured.



Figure 5- Pickle Lake District – Ardiden’s holdings in orange

* The potential quantities and grades stated for the Exploration Target is conceptual in nature and there has been insufficient exploration to define Mineral Resources across the exploration target area. It is uncertain if further exploration of these targets will produce results that permit additional Mineral Resources to be estimated.



ARDIDEN

2 - SOUTH LIMB GOLD PROSPECT- MOU WITH FIRST NATION GROUP AND MINES DEPARTMENT PERMIT

During the period, Ardiden also completed permitting requirements to enable exploration activities to advance its highly prospective 100%-owned South Limb Gold Prospect, a Brownfields Property, directly along strike of the Dona Lake Gold Mine (Figure 6).

The Company plans to undertake an initial exploratory drill programme at South Limb before the end of the calendar year.

As an integral part of the way Ardiden works, the Company has worked closely and patiently with the Mishkeegogamang First Nation to finalise this Agreement. The South Limb MOU is the Company's second Exploration Agreement in the Pickle Lake Gold Project area, and promotes a cooperative and mutually respectful relationship as Ardiden progresses exploration of its highly prospective Pickle Lake Gold Project.

Ardiden is working with the Council and Chiefs of three First Nation groups in the District to negotiate individual MOU's over various Gold Prospect areas to ensure traditional land users are consulted, and specific sensitivities or concerns are addressed at each location.

South Limb is 100% owned by Ardiden and has no earn-in liabilities.

The under-explored Prospect adjoins the Dona Lake Mine which comprises laterally continuous and magnetic Iron Formation. This prospective Iron Formation is hosted within a series of mafic metavolcanic assemblages, proximal to the Lake Ochig Pluton.

The continuation of this sulphide-rich Iron Formation from the Dona Lake Mine into South Limb extends approximately 9km and has so far produced 26 targets (Figure 6).

While weather and the COVID-19 situation are factors beyond Ardiden's control, the Company is proceeding with plans to drill several exploration holes close to the Dona Lake Mine boundary at South Limb.

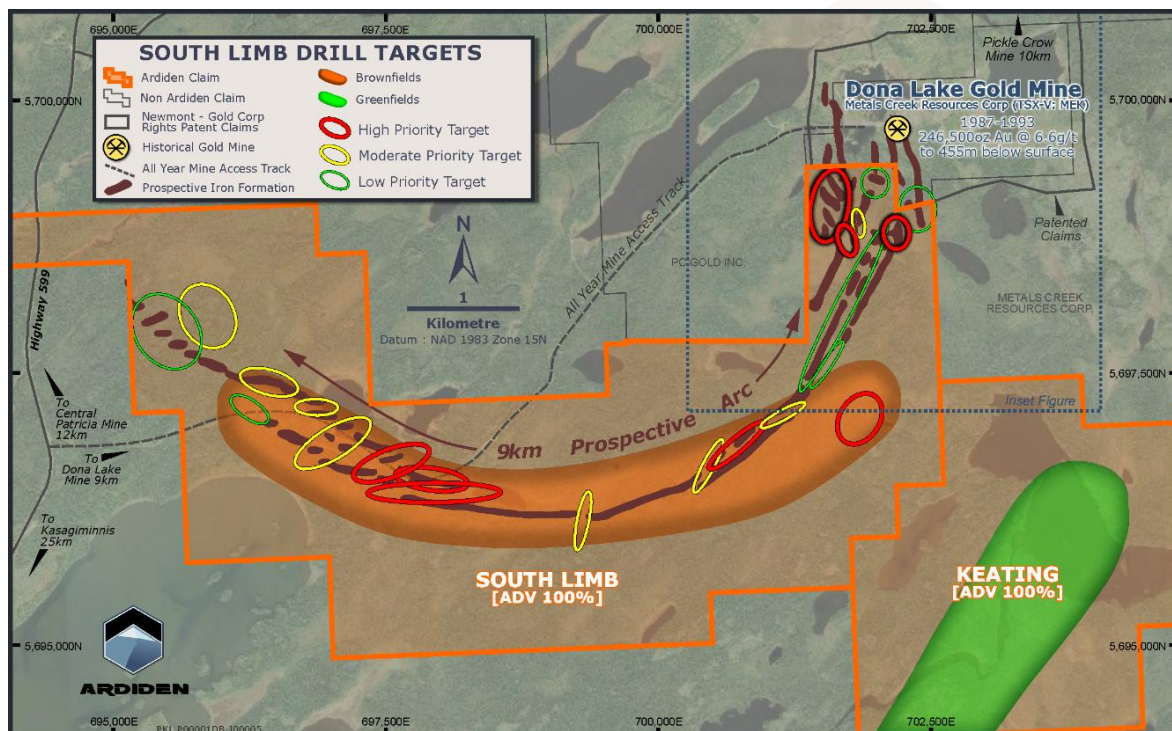


Figure 6 - South Limb Targets and Proximity to the Dona Lake Gold Mine



ARDIDEN

3 - NEW PATRICIA GOLD PROSPECT- DETAIL AIRBORNE GEOPHYSICS

During the period, the company completed a detailed airborne geophysical survey of the entire New Patricia Gold Property. New Patricia is the only Property within Ardiden's Pickle Lake Gold Project that has an earn-in arrangement.

To earn 100% of the New Patricia Gold Prospect over a three-year period (commencing January 2020), Ardiden has agreed to progressive payments to Exiro Minerals Corporation, amounting to a total of CAD226,200 in cash and 57.5m ADV shares. Ardiden has already paid CAD76,200 and issued 22.5m ADV shares towards the earn in (ASX Announcements 13 and 15 October 2020).

A preliminary review of raw data from the survey revealed multiple Tier-1 large-scale structural targets (Figure 7) analogous to significant high-grade gold mine settings in the area. Ardiden will now process and interpret the data with specialist Geophysical consultants to generate targets for further investigation and drilling in 2021.

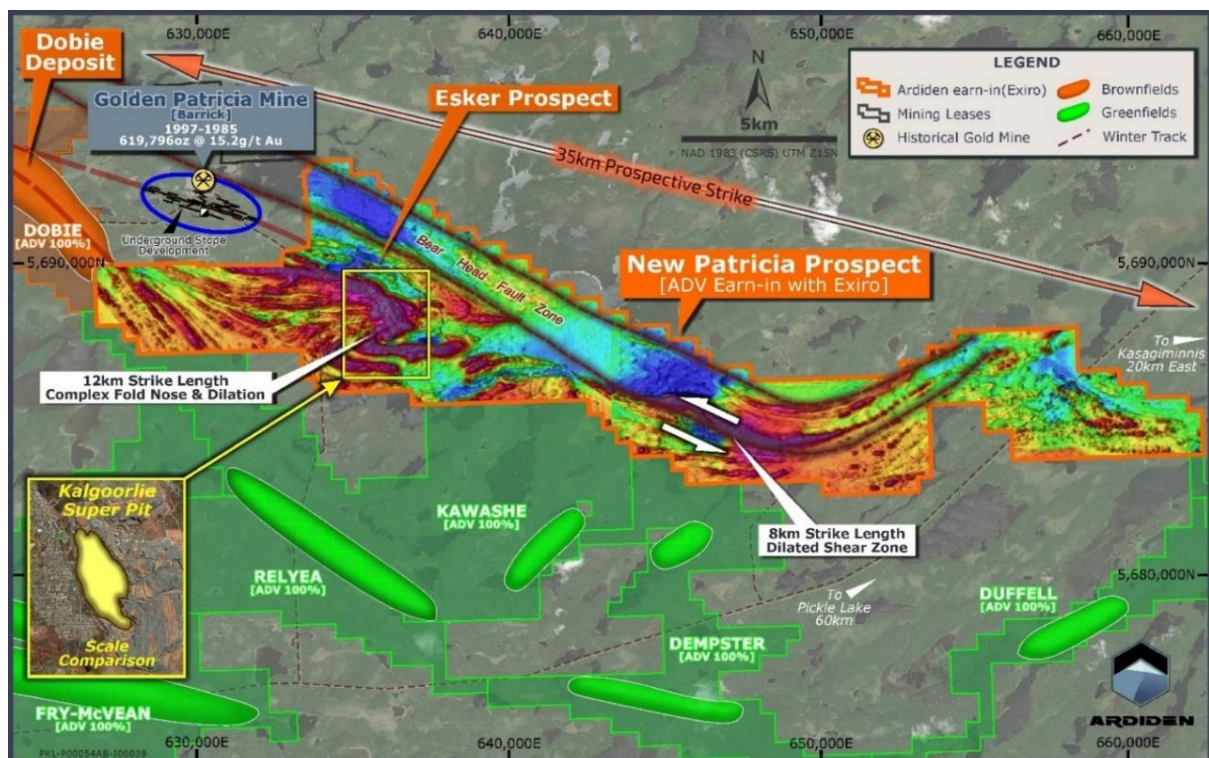


Figure 7- Preliminary Geophysical imagery over Ardiden's 35km-wide 'New Patricia' Gold Property

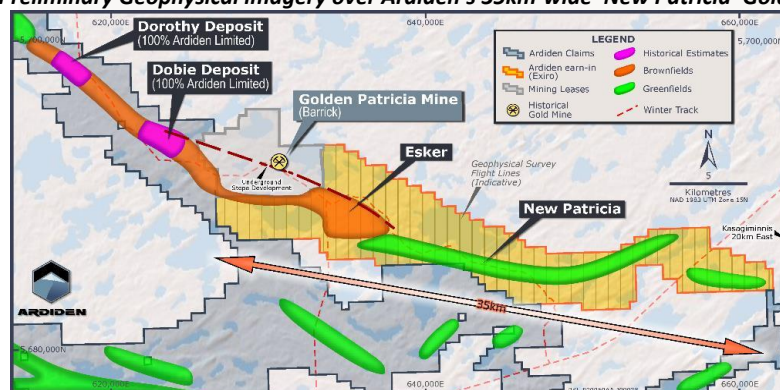
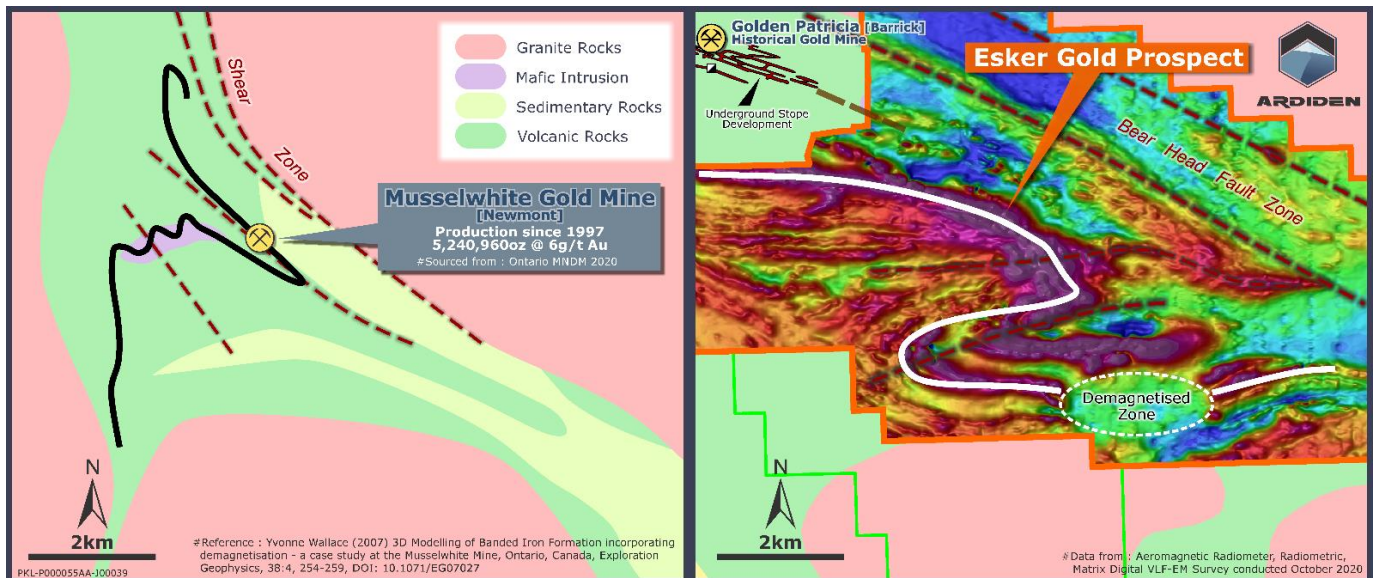


Figure 8- Identified Gold Deposits and Prospects along the 'New Patricia' Gold Property



ARDIDEN

The most obvious structure revealed in detail by the survey is at the Esker Gold Prospect, located just 3km east along strike of the Golden Patricia underground mine workings: A massive 8km-wide 'Fold-Nose' target is evident at Esker (below, Figure 9- right) which is analogous in size and structure to Newmont's 5Moz operating Musselwhite Gold Mine (Figure 9- left).



ARDIDEN'S HARD ROCK LITHIUM PROPERTIES

No exploration activity was undertaken at the Company's three 100%-owned Lithium properties located in northwest Ontario; **Seymour Lake, Root Lake and Wisa Lake**. Ardiden Limited is undertaking a desktop study investigating options relating to the development of the Company's Seymour Lake Lithium deposit in conjunction, and as part of their Memorandum of Understanding, with Rock Tech Lithium Inc. (TSV:RCK), who are developing the Georgia Lake Lithium deposit. Various scenarios relating to the level of processing at Seymour Lake and subsequent requirement for processing at Georgia Lake, in conjunction with different transportation methods were assessed. Ardiden is currently reviewing findings from this review with Rock Tech management.



Figure 10-Pegmatite outcrop at Ardiden's 100% owned Seymour Lake Lithium Project

ASX Code: ADV
ABN: 82 110 884 252

www.ardiden.com.au

ARDIDEN LIMITED
Level 1, 34 Colin Street
West Perth WA 6005
Tel: +61 (0) 8 9322 7600



ARDIDEN

CORPORATE

Ardiden successfully completed a capital raise of AUD4.5m at an issue price of AUD 0.012 per share to sophisticated and institutional investors to accelerate gold exploration. This included the attraction of 1832 Asset Management as substantial shareholder (8.2%). Participation in the Placement by the MD&CEO and Non-Executive Chairman was approved by shareholders at a General Meeting on 27 August 2020.

Investor Relations

Ardiden attended the RIU Resurgence Conference held at the Hyatt Regency Hotel in Perth during 15-16 September 2020. Ardiden's MD & CEO Rob Longley spoke at the Conference with the Presentation being released to the ASX and shareholders on 16 September.



Ardiden's Board at the RIU Resurgence Conference in Perth, held 15-16 September 2020

Cash Position

The Company's cash balance on 30 September 2020 was:

Australia:	AUD 412,406
Canada:	CAD 3,539,839
Total	AUD equivalent 4,125,654 (utilising AUD-CAD 0.9533 @ 30 September 2020)

Cash outflows for the September Quarter totalled \$1.9million across exploration activity (54%), staff costs (12%), corporate administration (13%), net GST/HST payments (7%) and costs associated with a capital raising (14%). Payments to related parties and their associates (as set out in section 6 of the Appendix 5B) totalled \$271,615, consisting of Executive and Non-executive Directors fees and salaries, a short term incentive payment to the Managing Director and CEO in respect of FY2020 activities, and superannuation payments. Cash inflows for the September Quarter totalled \$4.56million from a capital raising.

This information is authorised for ASX release by Rob Longley (Managing Director & CEO).

ENDS



ARDIDEN

For further information:

Investors:

Rob Longley

MD & CEO

Tel: +61 8 9322 7600

info@ardiden.com.au

Steven Wood

Company Secretary:

Tel +61 8 9322 7600

Forward Looking Statement

This announcement may contain some references to forecasts, estimates, assumptions and other forward-looking statements. Although the company believes that its expectations, estimates and forecast outcomes are based on reasonable assumptions, it can give no assurance that they will be achieved. They may be affected by a variety of variables and changes in underlying assumptions that are subject to risk factors associated with the nature of the business, which could cause actual results to differ materially from those expressed herein. All references to dollars (\$) and cents in this presentation are to Australian currency, unless otherwise stated. Investors should make and rely upon their own enquires and assessments before deciding to acquire or deal in the Company's securities.

About Ardiden Ltd

*Ardiden Limited (ASX: ADV) is an exploration company possessing an asset portfolio of projects located in the established mining jurisdiction of Ontario, Canada. **The Pickle Lake Gold Project** is located within the prolific gold-producing Meen-Dempster Greenstone Belt of the Uchi Geological Sub-province of the Superior Craton, near the township of Pickle Lake. The Project consists of multiple, yet joined gold properties, offering advanced exploration gold opportunities: namely the Kasagiminnis Gold Deposit, the Dorothy-Dobie Property, the New Patricia Property, the Fry-McVean Property and the West Pickle and South Limb Prospects.*

For more information including modelling parameters and details, the ASX announcements pertaining to Exploration Results and Mineral Resources are available from the Company's website: www.ardiden.com.au

GOLD:

Exploration Results, Pickle Lake Gold Project - *The information in this report that relates to Exploration Results and Exploration Targets at the Pickle Lake Prospects is based on information compiled by Mr Robin Longley, a Member of the Australian Institute of Geoscientists. Mr Longley is a full-time employee of Ardiden Limited. Mr Longley has sufficient experience which is relevant to the style of mineralisation and type of deposit and to the activity which they are undertaking to qualify as a Competent Person as defined in the 2012 Edition of the "Australasian Code for Reporting of Exploration Results, Mineral Resources and Ore Reserves". Mr Longley consents to the inclusion in this report of the matters based on this information in the form and context in which it appears.*

Kasagiminnis Deposit Gold Resources - *The information in this report that relates to Exploration Results and Mineral Resources is based on information compiled by Mr Robin Longley, a Member of the Australian Institute of Geoscientists, and Mrs Christine Standing, a Member of the Australian Institute of Geoscientists and a Member of the Australasian Institute of Mining and Metallurgy. Mr Longley is a full-time employee of Ardiden Limited. Mrs Standing is employed by Optiro Pty Ltd and is a consultant to Ardiden. Mr Longley and Mrs Standing have sufficient experience which is relevant to the style of mineralisation and type of deposit and to the activity which they are undertaking to qualify as a Competent Person as defined in the 2012 Edition of the "Australasian Code for Reporting of Exploration Results, Mineral Resources and Ore Reserves". Mr Longley and Mrs Standing consent to the inclusion in this report of the matters based on this information in the form and context in which it appears.*

The Company confirms it is not aware of any new information or data that materially affects the information included in this announcement and that all material assumptions and technical parameters underpinning the mineral resource estimates continue to apply and have not materially changed.

*The information in this report that relates to **non-JORC Historical Estimates** is based on is based on, and fairly represents, information and supporting documentation prepared by Mr Robin Longley, a Member of the Australian Institute of*



ARDIDEN

Geoscientists. The information in this announcement provided under ASX Listing Rules 5.12.2 to 5.12.7 is an accurate representation of the available data and studies for the Pickle Lake Gold Project. Mr Longley is a full-time employee of Ardiden Limited. Mr Longley consents to the inclusion in this report of the matters based on this information in the form and context in which it appears.

LITHIUM:

The Seymour Lake Lithium Project, 100% owned by Ardiden, contains the North Aubry Lithium Deposit, the South/central Aubry Lithium Deposit, the Pye Lithium Prospect and several areas in which pegmatites have been discovered but require additional testing. Ardiden's work has focussed upon evaluating the potential of the spodumene mineralisation at the North Aubry Lithium Deposit, both in terms of the scale and grade of the mineralisation and also the processing characteristics of the mineralisation. Preliminary metallurgical testing has confirmed the potential to produce a high-quality spodumene concentrate from the North Aubry mineralisation and exploration has confirmed that the grade of mineralisation is significant. The Seymour Lake Lithium Project is adjacent to the trans-Canadian railway with direct access to Ferland Train Station.

Seymour Lake Lithium Resources - The information in this announcement that relates to the Mineral Resource Estimate and the Exploration Target adjacent to the North Aubry Mineral Resource is based on, and fairly represents, information and supporting geological information and documentation that has been prepared by Mr Philip Alan Jones, an independent consulting geologist whom is a Member of the AusIMM and a Member of the AIG. Mr Jones is a Competent Person as defined in the 2012 edition of the "Australasian Code for Reporting of Exploration Results, Mineral Resources and Ore Reserves" (the JORC Code). He has more than five years of experience that is relevant to the style of mineralisation and type of deposit described in the announcement and in particular the completion of Mineral Resource Estimates. Mr Jones consents to the inclusion of the information in this report in the form and context in which it appears.

The Root Lake Lithium Project, 100% owned by Ardiden, is about 25km south southwest of the settlement of Slate Falls. It contains spodumene-bearing pegmatites that have been determined to be at least 500m long. Historical work has confirmed significant grades, e.g. up to 5.10% Li₂O. The Root Bay Lithium Project (also 100% owned by Ardiden) is strategically located approximately 5km to the east of the Root Lake Lithium Project and consists of three claim areas and was staked by Ardiden as part of its regional exploration focus in and around the Root Bay spodumene-bearing pegmatite. The presence of spodumene-bearing pegmatites in the project has been confirmed.

The Wisa Lake Lithium Project (100% owned by Ardiden) is located 80km east of Fort Frances, in Ontario, Canada and only 8km north of the Minnesota/USA border. An all-weather road connects the project to Highway 11 (the Trans-Canada Highway), which is located 65km north of the project. Several spodumene-bearing pegmatites are known to outcrop within the project, with some historical drilling having been completed.

**ARDIDEN****QUARTERLY TENEMENT SUMMARY****1. The mining tenements held at the end of the quarter and their location.**

Gold Projects	Tenement Number/Claim ID	Status	Location	Beneficial Percentage Interest
Pickle Lake - Connections	536230, 536231, 536232, 536233, 536234, 536235, 536236, 536237, 536238, 536239, 536240, 536241, 536242, 536243, 536244, 536245, 536246, 536247, 536248, 536249, 541336, 541337, 541341, 541344, 541345, 541346, 541350, 541355, 541358, 541359, 541360, 541361, 541366, 541367, 541368, 541369, 541370, 541371, 541372, 541373, 541374, 541376, 541377, 541378, 541379, 541380, 541381, 541382, 541383, 541384, 541385, 541387, 541388, 541389, 541390, 541391, 541392, 541393, 541394, 541395, 541396, 541397, 541398, 541399, 541400, 541401, 566571, 566572, 566573, 566574, 566575, 566576, 566577, 566578, 566579, 566580, 566581, 566582, 566583, 566584, 566585, 566586, 566587, 566588, 566589, 566590, 566591, 566592, 566593, 566594, 566595, 566596, 566597, 566598, 566599, 566600, 566601, 566602, 566603, 566604, 566605, 566606, 566607, 566608, 566609, 566610, 566611, 566612, 566613, 566614, 566615, 566616, 566617	Granted	Ontario, Canada	100%
Pickle Lake – Dempster Lake	579770, 579771, 579772, 579773, 579774, 579997, 579998, 580004, 580005, 580006, 580007, 580008, 580009, 580010, 580015, 580016, 580017, 580018, 580019, 580020, 580021, 580022, 580023, 580024, 580025, 580026, 580027, 580028, 580029, 580030, 580031, 580032, 580033, 580034, 580035, 580036, 580037, 580038, 580039, 580040, 580041, 580042, 580043, 580044, 580045, 580046, 580047, 580048, 580049, 580050, 580051, 580052, 580053, 580054, 580055, 580056, 580057, 580058, 580059, 580060, 580061, 580062, 580063, 580064, 580065, 580066, 580067, 580068, 580069, 580070, 580071, 580072, 580073, 580074, 580075, 580076, 580077, 580078, 580079, 580080, 580081, 580082, 580083, 580084, 580085, 580086, 580087, 580088, 580089, 580090, 580091, 580092, 580093, 580094, 580095, 580096, 580097, 580098, 580099, 580100, 580101, 580102, 580103, 580104, 580105, 580106, 580107, 580108, 580109, 580110, 580111, 580112, 580113, 580114, 580115, 580116, 580117, 580118, 580119, 580120, 580121, 580122, 580123, 580124, 580125, 580126, 580127, 580128, 580129, 580130, 580131, 580132, 580133, 580134, 580135, 580136, 580137, 580138, 580139, 580140, 580141, 580142, 580151, 580152, 580153, 580154, 580155, 580156, 580189, 580190, 580295, 580296, 580297, 580298, 580299, 580300, 580301, 580302, 580303, 580304, 580305, 580306, 580307, 580308, 580309, 580310, 580311, 580312, 580313, 580314, 580315, 580316, 580317, 580318, 580319, 580320, 580321, 580322, 580323, 580324, 580325, 580326, 580327, 580328, 580329, 580330, 580331, 580332, 580333, 580334, 580335, 580336, 580337, 580338, 580339, 580340, 580341, 580342, 580343, 580344	Granted	Ontario, Canada	100%
Pickle Lake – Dorothy Dobie	205183, 205183, 205184, 205184, 134232, 134232, 134232, 343787, 208735, 104984, 105912, 106176, 106277, 106277, 106701, 108546, 108547, 110665, 112086, 112889, 112990, 123364, 123364, 123364, 124723, 128625, 129964, 129964, 130012, 130849, 130944, 130945, 131221, 133040, 133429, 134448, 134753, 134753, 135762, 136226, 140102, 140103, 140104, 140104, 141205, 143008, 143009, 145694, 146037, 146037, 146857, 146858, 146858, 147714, 149493, 149493, 149494, 150199, 150524, 150822, 150823, 150823, 154016, 154661, 155274, 156088, 157127, 159811, 161295, 161344, 161961, 162581,	Granted	Ontario, Canada	100%



ARDIDEN

Gold Projects	Tenement Number/Claim ID	Status	Location	Beneficial Percentage Interest
	162582, 162582, 163914, 163956, 163956, 166547, 166547, 166547, 166548, 168691, 168691, 169333, 169948, 176602, 176602, 176661, 176770, 176793, 176991, 178279, 178630, 178776, 178776, 181433, 181634, 183363, 183657, 183658, 183658, 183659, 183660, 183661, 183802, 186059, 186838, 186839, 186840, 186840, 187792, 187793, 192633, 193812, 195459, 195771, 196502, 200893, 200893, 201767, 205185, 207317, 207318, 208736, 209087, 212985, 213019, 213019, 213020, 214000, 214531, 215430, 215446, 215505, 217414, 221873, 223180, 223229, 223229, 225203, 231209, 231209, 231210, 231211, 233344, 234028, 234647, 234647, 235998, 235998, 236504, 236505, 236506, 236858, 236858, 237737, 237738, 242025, 242026, 242027, 242865, 242885, 245369, 246370, 246778, 246778, 248523, 250184, 250376, 250377, 250729, 250918, 250919, 250920, 250920, 251226, 251227, 252855, 253832, 253832, 253833, 253834, 254138, 254138, 254138, 254139, 254140, 255485, 255486, 257815, 257815, 257816, 261457, 261968, 262541, 265913, 265913, 265914, 265914, 269312, 269419, 272648, 273934, 273935, 274481, 277187, 279407, 279431, 279432, 279432, 282045, 282178, 282178, 282650, 282650, 282650, 284007, 287953, 287954, 287954, 289318, 290701, 290701, 292076, 292077, 292077, 292078, 292078, 297909, 297946, 298040, 299720, 299721, 300389, 301466, 302098, 302509, 302510, 303780, 308300, 308702, 308703, 308704, 310059, 310268, 310973, 310973, 310973, 311804, 316960, 316961, 316984, 316985, 316985, 317711, 319530, 319856, 322018, 323277, 323278, 323279, 329251, 329351, 332358, 333405, 334448, 336319, 336320, 337656, 337657, 337827, 337828, 338360, 340200, 340994, 342957, 343786, 343786, 343788, 566618, 566619, 566620, 566621, 566622, 566623, 566624, 566625, 566626, 566627, 566628, 566629, 566630, 566631, 566632, 566633, 566634, 566635, 566636, 566637, 566638, 566639, 566640, 566641, 566642, 566643, 566644, 566645, 566646, 566647, 566648, 566649, 566650, 566651, 566652, 566653, 566654, 566655, 566656, 566657, 566658, 566659, 566660, 566661, 566662, 566663, 566664, 566935, 566936, 566937, 566938, 566939, 566940, 566941, 566942, 566943, 566944, 566945, 566946, 566947, 566948, 566949, 566950, 566951, 566952, 566953, 566954, 566955, 566956, 566957, 566958, 566959, 566960, 566961, 566962, 566963, 566964, 566965, 566966, 566967, 566968, 566969, 566970, 566971, 566972, 566973, 566974, 566975, 566976, 566977, 566978, 566979, 566980, 566981, 566982, 566983, 566984,			
Pickle Lake – Duffell Lake	579696, 579697, 579698, 579699, 579700, 579701, 579702, 579703, 579704, 579705, 579706, 579707, 579708, 579709, 579710, 579711, 579712, 579713, 579714, 579715, 579716, 579717, 579718, 579719, 579720, 579721, 579722, 579723, 579724, 579725, 579726, 579727, 579728, 579729, 579730, 579731, 579732, 579733, 579734, 579735, 579736, 579737, 579738, 579739, 579740, 579741, 579742, 579743, 579744, 579745, 579746, 579747, 579748, 579749, 579750, 579751, 579752, 579753, 579754, 579755, 579756, 579757, 579758, 579759, 579760, 579761, 579762, 579763, 579764, 579765, 579766, 579767, 579768, 579769, 579993, 579994, 579995, 579996, 579999, 580000, 580001, 580002, 580003, 580011, 580012, 580013, 580014,	Granted	Ontario, Canada	100%
Pickle Lake – Fry-McVean	581408, 581409, 581410, 581411, 581412, 581413, 581414, 581415, 581416, 581417, 581418, 581419, 581420, 581421, 581422, 581423, 581424, 581425, 581426, 581427, 581428, 581429, 581430, 581431, 581432, 581433, 581434, 581435, 581436, 581437, 581438, 581439, 581440, 581441, 581442, 581443, 581449, 581450, 581451, 581452,	Granted	Ontario, Canada	100%



ARDIDEN

Gold Projects	Tenement Number/Claim ID	Status	Location	Beneficial Percentage Interest
	581458, 581459, 581460, 581461, 581462, 581463, 581464, 581465, 581466, 581467, 581468, 581469, 581470, 581471, 581472, 581473, 581474, 581475, 581476, 581477, 581478, 581479, 581480, 581481, 581482, 581483, 581484, 581485, 581486, 581487, 581488, 581489, 581490, 581491, 581492, 581493, 581494, 581495, 581496, 581497, 581498, 581499, 581500, 581501, 581502, 581503, 581504, 581505, 581506, 581507, 581508, 581509, 581510, 581511, 581512, 581513, 581514, 581515, 581516, 581517, 581518, 581519, 581520, 581521, 581522, 581523, 581524, 581525, 581526, 581527, 581528, 581529, 581530, 581531, 581532, 581533, 581534, 581535, 581536, 581537, 581538, 581539, 581540, 581541, 581542, 581543, 581544, 581545, 581546, 581547, 581548, 581549, 581550, 581551, 581552, 581553, 581554, 581555, 581556, 581557, 581558, 581559, 581560, 581561, 581562, 581563, 581564, 581565, 581566, 581567, 581568, 581569, 581570, 581571, 581572, 581573, 581574, 581575, 581576, 581577, 581578, 581579, 581580, 581581, 581582, 581583, 581584, 581585, 581586, 581587, 581588, 581589, 581590, 581591, 581592, 581593, 581594, 581595, 581596, 581597, 581598, 581599, 581600, 581601, 581602, 581603, 581604, 581605, 581606, 581607, 581608, 581609, 581610, 581611, 581612, 581613, 581614, 581615, 581616, 581617, 581618, 581619, 581620, 581621, 581622, 581623, 581624, 581625, 581626, 581627, 581628, 581629, 581630, 581631, 581632, 581633, 581634, 581635, 581636, 581637, 581638, 581639, 581640, 581641, 581642, 581643, 581644, 581645, 581646, 581647, 581648, 581649, 581650, 581651, 581652, 581653, 581654, 581655, 581656, 581657, 581658, 581659, 581660, 581661, 581662, 581663, 581664, 581665, 581666, 581667, 581668, 581669, 581670, 581671, 581672, 581673, 581674, 581675, 581676, 581677, 581678, 581679, 581680, 581681, 581682, 581683, 581684, 581685, 581686, 581687, 581688, 581689, 581690, 581691, 581692, 581693, 581694, 581695, 581696, 581697, 581698, 581699, 581700, 581701, 581702, 581703, 581704, 581705, 581706, 581707, 581726, 581727, 581728, 581729, 581730, 581731, 581732, 581733, 581734, 581735, 581736, 581737, 581738, 581739, 581740, 581741, 581742, 581743, 581744, 581745, 581746, 581747, 581748, 581749, 581750, 581751, 581752, 581753, 581754, 581755, 581756, 581757, 581758, 581759, 581760, 581761, 581762, 581763, 581764, 581765, 581766, 581767, 581768, 581769, 581770, 581771, 581772, 581773, 581774, 581775, 581779, 581780, 581781, 581782, 581783, 581784, 581785, 581786, 581787, 581788, 581789, 581790, 581791, 581792, 581793, 581794, 581795, 581796, 581797, 581798, 581799, 581800, 581801, 581802, 581803, 581804, 581805, 581806, 581807, 581808, 581809, 581810, 581811, 581812, 581813, 581814, 581815, 581816, 581817, 581818, 581819, 581820, 581821, 581822, 581823, 581824, 581825, 581826, 581827, 581828, 581830, 581831, 581832, 581833, 581834, 581835, 581836, 581837, 581838, 581839, 581840, 581841, 581842, 581843, 581844, 581845, 581846, 581847, 581848, 581849, 581850, 581851, 581852, 581853, 581854, 581855, 581856, 581857, 581858, 581859, 581860, 581861, 581862, 581863, 581864, 581865, 581866, 581867, 581868, 581869, 581870, 581871, 581872, 581873, 581874, 581875, 581876, 581877, 581878, 581879, 581880, 581881, 581882, 581883, 581884, 581885, 581886, 581887, 581888, 581889, 581890, 581891, 581892, 581893, 581894, 581895, 581896, 581897, 581898, 581899, 581900, 581901, 581902, 581903, 581904, 581905, 581906, 581907, 581908, 581909, 581910, 581911,			



ARDIDEN

Gold Projects	Tenement Number/Claim ID	Status	Location	Beneficial Percentage Interest
	581912, 581913, 581914, 581915, 581916, 581917, 581918, 581919, 581920, 581921, 581922, 581923, 581924, 581925, 581926, 581927, 581928, 581929, 581930, 581931, 581932, 581933, 581934, 581935, 581936, 581937, 581938, 581939, 581940, 581941, 581942, 581943, 581944, 581945, 581946, 581947, 581948, 581949, 581950, 581951, 581952, 581953, 581954, 581955, 581956, 581957, 581958, 581959, 581960, 581961, 581962, 581963, 581964, 581965, 581966, 581967, 581968, 581969, 581970, 581971, 581972, 581973, 581974, 581975, 581976, 581977, 581978, 581979, 581981, 581982, 581983, 581984, 581985, 581986, 581987, 581988, 581989, 581990, 581991, 581992, 581993, 581994, 581995, 581996, 581997, 581998, 581999, 582000, 582001, 582002, 582003, 582004, 582005, 582006, 582007, 582008, 582009, 582010, 582011, 582012, 582013, 582014, 582015, 582016, 582017, 582018, 582019, 582020, 582021, 582022, 582023, 582024, 582025, 582026, 582027, 582028, 582029, 582030, 582031, 582032, 582033, 582034, 582035, 582036, 582037, 582038, 582039, 582040, 582041, 582042, 582043, 582044, 582045, 582046, 582047, 582048, 582049, 582050, 582051, 582052, 582053, 582054, 582055, 582056, 582057, 582058, 582059, 582060, 582061, 582062, 582063, 582064, 582065, 582066, 582067, 582068, 582069, 582070, 582071, 582072, 582073, 582074, 582075, 582076, 582077, 582078, 582079, 582080, 582081, 582082, 582083, 582084, 582085, 582086, 582087, 582088, 582089, 582090, 582091, 582092, 582093, 582094, 582095, 582096, 582097, 582098, 582099, 582100, 582101, 582102, 582103, 582104, 582105, 582106, 582107, 582108, 582109, 582110, 582111, 582112, 582113, 582114, 582115, 582116, 582117, 582118, 582119, 582120, 582121, 582122, 582123, 582124, 582125, 582126, 582127, 582128, 582129, 582130, 582131, 582132, 582133, 582134, 582135, 582136, 582137, 582138, 582139, 582140, 582141, 582142, 582143, 582144, 582145, 582146, 582147, 582148, 582149, 582150, 582151, 582152, 582153, 582154, 582155, 582156, 582157, 582158, 582159, 582160, 582161, 582162, 582163, 582164, 582165, 582166, 582167, 582168, 582169, 582170, 582171, 582172, 582173, 582174, 582175, 582176, 582177, 582178, 582179, 582180, 582181, 582182, 582183, 582184, 582185, 582186, 582187, 582188, 582189, 582190, 582191, 582192, 582193, 582194, 582195, 582196, 582197, 582198, 582199, 582200, 582201, 582202, 582203, 582204, 582205, 582206, 582207, 582208, 582209, 582210, 582211, 582212, 582213, 582214, 582215, 582216, 582217, 582218, 582219, 582220, 582221, 582222, 582223, 582224, 582225, 582226, 582227, 582228, 582229, 582230, 582231, 582232			
Pickle Lake – Jean Lake	574692, 574693, 574694, 574695, 574696, 574697, 574698, 574699, 574700, 574701, 574702, 574703, 574704, 574705, 574706, 574707, 574708, 574709, 574710, 574711, 574712, 574713, 574714, 574715, 574716, 574717, 574718, 574719, 574720, 574721, 574730, 574734, 574735, 574736, 574737, 574738, 574739, 574740, 574741, 574792, 574793, 574794, 574795, 574796, 574797, 574798, 574799, 574800, 574801, 574802, 574803, 574804, 574805, 574806, 574807, 574808, 574809, 574810, 574811, 574812, 574813, 574814, 574815, 574816, 574817, 574818, 574819, 574820, 574821, 574822, 574823, 574824, 574825, 574826, 574827, 574828, 574829, 574830, 574831, 574832, 574833, 574834, 574835, 574836, 574837, 574838, 574839, 574840, 574841, 574864, 574865, 574866, 574867, 574868, 574869, 574870,	Granted	Ontario, Canada	100%
Pickle Lake – Kasagiminnis	107775, 107775, 110169, 122181, 122182, 122183, 122898, 122899, 124715, 124716, 124717, 133631, 136219, 136220, 136221, 141049,	Granted	Ontario, Canada	100%



ARDIDEN

Gold Projects	Tenement Number/Claim ID	Status	Location	Beneficial Percentage Interest
	142242, 178845, 178845, 178846, 181427, 186270, 187592, 188198, 188198, 198429, 198430, 199793, 200883, 236848, 236849, 253606, 253607, 253607, 254414, 265109, 266397, 281542, 282778, 289590, 290904, 290905, 292065, 292066, 292066, 301653, 301653, 310309, 310310, 310311, 310962, 319583, 340456, 340456, 341762, 341763			
Pickle Lake – Kawashe Lake	574871, 574872, 574873, 574874, 574875, 574876, 574877, 574878, 574879, 574880, 574881, 574882, 574883, 574884, 574885, 574886, 574887, 574888, 574889, 574890, 574891, 574892, 574893, 574894, 574895, 574896, 574897, 574898, 574899, 574900, 574901, 574902, 574903, 574904, 574905, 574906, 574907, 574908, 574909, 574910, 574911, 574912, 574913, 574914, 574915, 574916, 574917, 574918, 574919, 574920, 574921, 574922, 574923, 574924, 574925, 574926, 574927, 574928, 574929, 574930, 574931, 574932, 574933, 574934, 574935, 574936, 574937, 574938, 574939, 574940, 574941, 574942, 574943, 574944, 574945, 574946, 574947, 574948, 574949, 574950, 574951, 574952, 574953, 574954, 574955, 574956, 574957, 574958, 574959, 574960, 574961, 574962, 574963, 574964, 574965, 574966, 574967, 574968, 574969, 574970, 574971, 574972, 574973, 574974, 574975, 574976, 574977, 574978, 574979, 574980, 574981, 574982, 574983, 574984, 574985, 574986, 574987, 574988, 574989, 574990, 574991, 574992, 574993, 574994, 574995, 574996, 574997, 574998, 574999, 575000, 575001, 575002, 575003, 575004, 575005, 575006, 575007, 575008, 575009, 575010, 575011, 575012, 575013, 575014, 575015, 575016, 575017, 575018, 575019, 575020, 575021, 575022, 575023, 575024, 575025, 575026, 575027, 575028, 575029, 575030, 575031, 575032, 575033, 575034, 575035, 575036, 575037, 575038, 575039, 575040, 575041, 575042, 575043, 575044, 575045, 575046, 575047, 575048, 575049, 575050, 575051, 575052, 575053, 575054, 575055, 575056, 575057, 575058, 575059, 575060, 575061, 575062, 575063, 575064, 575065, 575066, 575067, 575068, 575069, 575070, 575071, 575072, 575073, 575074, 575075, 575076, 575077, 575078, 575079, 575080, 575081, 575082, 575083, 575084, 575085, 575086, 575087, 575088, 575089, 575090, 575091, 575092, 575093, 575094, 575095, 575096, 575097, 575098, 575099, 575100, 575101, 575102, 575103, 575104, 575105, 575106, 575107, 575108, 575109, 575110, 575111, 575112, 575113, 575114, 575115, 575116, 575117, 575118, 575119, 575120, 575121, 575122, 575123, 575124, 575125, 575126, 575127, 575128, 575129, 575130, 575131, 575132, 575133, 575134, 575135, 575136, 575137, 575138, 575139, 575140, 575141, 575142, 575143, 575144, 575145, 575146, 575147, 575148, 575149, 575150, 575151, 575152, 575153, 575154, 575155, 575156, 575157, 575158, 575159, 575160, 575161, 575162, 575163, 575164, 575165, 575166, 575167, 575168, 575169, 575170, 575171, 575172, 575173, 575174, 575175, 575176, 575177, 575178, 575179, 575180, 575181, 575182, 575183, 575184, 575185, 575186, 575187, 575188, 575189, 575190, 575191, 575192, 575193, 575194, 575195, 575196, 575197, 575198,	Granted	Ontario, Canada	100%
Pickle Lake – Keating Lake	574492, 574493, 574494, 574495, 574496, 574497, 574498, 574499, 574500, 574501, 574502, 574503, 574504, 574505, 574506, 574507, 574508, 574509, 574510, 574511, 574512, 574513, 574514, 574515, 574516, 574517, 574518, 574519, 574520, 574521, 574522, 574523, 574524, 574525, 574526, 574527, 574528, 574529, 574530, 574531, 574532, 574533, 574534, 574535, 574536, 574537, 574538, 574539, 574540, 574541, 574542, 574543, 574544, 574545, 574546, 574547, 574548, 574549, 574550, 574551, 574552, 574553, 574554, 574555,	Granted	Ontario, Canada	100%



ARDIDEN

Gold Projects	Tenement Number/Claim ID	Status	Location	Beneficial Percentage Interest
	574556, 574557, 574558, 574559, 574560, 574561, 574562, 574563, 574564, 574565, 574566, 574567, 574568, 574569, 574570, 574571, 574572, 574573, 574574, 574575, 574576, 574577, 574578, 574579, 574580, 574581, 574582, 574583, 574584, 574585, 574586, 574587, 574588, 574589, 574590, 574591, 574722, 574723, 574724, 574725, 574726, 574727, 574728, 574729, 574731, 574732, 574733, 579929, 579930, 579931, 579932, 579933, 579934, 579935, 579936, 579937, 579938, 579939, 579940, 579941, 579942, 579943, 579944, 579945, 579946, 579947, 579948, 579949, 579950, 579951, 579952, 579953, 579954, 579955, 579956, 579957, 579958, 579959, 579960, 579961, 579962, 579963, 579964, 579965, 579966, 579967, 579968, 579969, 579970, 579971, 579972, 579973, 579974, 579975, 579976, 579977, 579978			
Pickle Lake – Meen Lake	579779, 579780, 579781, 579782, 579783, 579784, 579785, 579786, 579787, 579788, 579789, 579790, 579791, 579792, 579793, 579794, 579795, 579796, 579797, 579798, 579799, 579800, 579801, 579802, 579803, 579804, 579805, 579806, 579807, 579808, 579809, 579810, 579811, 579812, 579813, 579814, 579815, 579816, 579817, 579818, 579819, 579820, 579821, 579822, 579823, 579824, 579825, 579826, 579827, 579828, 579829, 579830, 579831, 579832, 579833, 579845, 579851, 579857, 579862, 579867, 579868, 579873, 579874,	Granted	Ontario, Canada	100%
Pickle Lake – Meen Lake West	579775, 579776, 579777, 579778, 579834, 579835, 579836, 579837, 579838, 579839, 579840, 579841, 579842, 579843, 579844, 579846, 579847, 579848, 579849, 579850, 579852, 579853, 579854, 579855, 579856, 579858, 579859, 579860, 579861, 579863, 579864, 579865, 579866, 579869, 579870, 579871, 579872, 579875, 579876, 579877, 579878, 579879, 579880, 579881, 579882, 579883, 579884, 579885, 579886, 579887, 579888, 579889, 579890, 579891, 579892, 579893, 579894, 579895, 579896, 579897, 579898, 579899, 579900, 579901, 579902, 579903, 579904, 579905, 579906, 579907, 579908, 579909, 579910, 579911, 579912, 579913, 579914, 579915, 579916, 579917, 579918, 579919, 579920, 579921, 579922, 579923, 579924, 579925, 579926, 579927, 579928,	Granted	Ontario, Canada	100%
Pickle Lake – New Patricia	147867, 147869, 147871, 214522, 214524, 251221, 260527, 300387, 315010, 329914, 329916, 339299, 131784, 147868, 147870, 161958, 184465, 196500, 211821, 211821, 214523, 248517, 248519, 315009, 315009, 315011, 315011, 317709, 329913, 329915, 335930, 159805, 193806, 193806, 240460, 248516, 248516, 248518, 500919, 500920, 500921, 500922, 500923, 500924, 500925, 500926, 500927, 500928, 500929, 500930, 500931, 500932, 500933, 500934, 500935, 500936, 500937, 500938, 500939, 500940, 500941, 500942, 500943, 500944, 500945, 500946, 500947, 500948, 500949, 500950, 500951, 500952, 500953, 500954, 500955, 500956, 500957, 500958, 500959, 500960, 500961, 500962, 500963, 500964, 500965, 500966, 500967, 500968, 500969, 500970, 500971, 500972, 500973, 500974, 500975, 500976, 500977, 500978, 500979, 500980, 500981, 500982, 500983, 500984, 500985, 500986, 500987, 500988, 500989, 500990, 500991, 500992, 500993, 500994, 500995, 500996, 500997, 500998, 500999, 501000, 501001, 501002, 501003, 501004, 501005, 501006, 501007, 501008, 501009, 501010, 501011, 501012, 501013, 501014, 501015, 501016, 501017, 501018, 501142, 501143, 501144, 501145, 501146, 501147, 501148, 501149, 501150, 501151, 501152, 501153, 501154, 501155, 501156, 501157, 501158, 501159, 501160, 501161, 501162, 501163, 501164, 501165, 501166, 501167, 501168, 501169, 501170, 501171,	Optioned	Ontario, Canada	100%



ARDIDEN

Gold Projects	Tenement Number/Claim ID	Status	Location	Beneficial Percentage Interest
	501172, 501173, 501174, 501175, 501176, 501177, 501178, 501179, 501180, 501181, 501182, 501183, 501184, 501185, 501186, 501187, 501188, 501189, 501190, 501191, 501210, 501211, 501212, 501213, 501214, 501215, 501216, 501217, 501218, 501219, 501220, 501221, 501222, 501223, 501224, 501225, 501226, 501227, 501228, 501229, 501230, 501231, 501232, 501233, 501234, 501235, 501236, 501237, 501238, 501239, 501240, 501241, 501242, 501243, 501244, 501245, 501246, 501247, 501248, 501249, 501250, 501251, 501252, 501253, 501254, 501255, 501256, 501257, 501258, 501259, 501292, 501293, 501294, 501295, 501296, 501297, 501298, 501299, 501300, 501301, 501302, 501303, 501304, 501305, 501306, 501307, 501308, 501309, 501310, 501311, 501312, 501313, 501314, 501315, 501316, 501317, 501318, 501319, 501320, 501321, 501322, 501323, 501324, 501325, 501326, 501327, 501328, 501329, 501330, 501331, 501332, 501333, 501339, 501340, 501341, 501342, 501343, 501344, 501345, 501346, 501347, 501348, 501349, 501350, 501351, 501352, 501353, 501354, 501355, 501356, 501357, 501358, 501359, 501360, 501361, 501362, 501363, 501364, 501365, 501366, 501367, 501368, 501369, 501370, 501371, 501372, 501373, 501374, 501375, 501376, 501377, 501378, 501379, 501380, 501381, 501382, 501383, 501384, 501385, 501386, 501387, 501388, 501527, 501528, 501529, 501530, 501531, 501532, 501533, 501534, 501535, 501536, 501537, 501538, 501539, 501540, 501541, 501542, 501543, 501544, 501545, 501546, 501547, 501548, 501549, 501550, 501551, 501552, 501568, 501569, 501570, 501571, 501572, 501573, 501574, 501575, 501576, 501577, 501578, 501579, 501580, 501581, 501582, 501583, 501584, 501585, 501586, 501587, 501588, 501589, 501590, 501591, 501592, 501593, 501594, 501595, 501596, 501597, 501598, 501599, 501600, 501601, 501602, 501603, 501604, 501605, 501606, 501607, 501608, 501609, 501610, 501611, 501612, 501613, 501614, 501615, 501616, 501617, 501814, 501815, 501816, 501817, 501818, 501819, 501820, 501821, 501822, 501823, 501824, 501825, 501826, 501827, 501828, 501829, 501830, 501831, 501832, 501833, 501834, 501835, 501836, 501837, 501838, 501839, 501840, 501841, 501842, 501843, 501844, 501845, 501846, 501847, 501848, 501849, 501850, 501851, 501852, 501853, 501854, 501855, 501856, 501857, 501858, 501859, 501860, 501861, 501862, 501863, 502011, 502012, 502013, 502014, 502015, 502016, 502017, 502018, 502019, 502020, 502021, 502022, 502023, 502024, 502025, 502026, 502027, 502028, 502029, 502030, 502031, 502032, 502033, 502034, 502035, 502036, 502037, 502038, 502039, 502040, 502041, 502042, 502043, 502044, 502045, 502046, 502047, 502048, 502049, 502050, 502051, 502052, 502053, 502054, 502055, 502056, 502057, 502058, 502059, 502060, 502132, 502133, 502134, 502135, 502136, 502137, 502138, 502139, 502140, 502141, 502142, 502143, 502144, 502145, 502146, 502147, 502148, 502149, 502150, 502151, 502152, 502153, 502154, 502155, 502156, 502157, 502158, 502159, 502160, 502161, 502162, 502163, 502164, 502165, 502166, 502167, 502168, 502169, 502170, 502171, 502172, 502173, 502174, 502175, 502176, 502177, 502178, 502179, 502180, 502181, 502227, 502229, 502231, 502232, 502234, 502236, 502238, 502240, 502241, 502243, 502245, 520337, 520338, 520339, 520340, 520935, 520936, 520937, 520938, 520939, 520940, 520941, 520942, 520943, 520944, 520945, 520946, 520947, 520948, 520949, 520950, 520951, 520952, 520953, 520954, 520955, 520956, 520957, 520958, 520959, 520960, 520961, 520962, 520963,			



ARDIDEN

Gold Projects	Tenement Number/Claim ID	Status	Location	Beneficial Percentage Interest
	520964, 520965, 520966, 520967, 520968, 520969, 520970, 520971, 520972, 520973, 520974, 520975, 520976, 520977, 520978, 520979, 520980, 520981, 520982, 520983, 520984, 520985, 520986, 520987, 520988, 520989, 520990, 520991, 520992, 520993, 520994, 520995, 520996, 520997, 520998, 520999, 521000, 521001, 521002, 521003, 521004, 521005, 521006, 521007, 521008, 521009, 521010, 521011, 521012, 521013, 521014, 521015, 521016, 521017, 521018, 521019, 521020, 521021, 521022, 521023, 521024, 521025, 521026, 521027, 521028, 521029, 521030, 521031, 521032, 521033, 521034, 521035, 521036, 521037, 521038, 521039, 521040, 521041, 521042, 521043, 521044, 521045, 521046			
Pickle Lake – Relyea Lake	580157, 580158, 580159, 580160, 580161, 580162, 580163, 580164, 580165, 580166, 580167, 580168, 580169, 580170, 580171, 580172, 580173, 580174, 580175, 580176, 580177, 580178, 580179, 580180, 580181, 580182, 580183, 580184, 580185, 580186, 580187, 580188, 580191, 580192, 580193, 580194, 580195, 580196, 580197, 580198, 580199, 580200, 580201, 580202, 580203, 580204, 580205, 580206, 580207, 580208, 580209, 580210, 580211, 580212, 580213, 580214, 580215, 580216, 580217, 580218, 580219, 580220, 580221, 580222, 580223, 580224, 580225, 580226, 580227, 580228, 580229, 580230, 580231, 580232, 580233, 580234, 580235, 580236, 580237, 580238, 580239, 580240, 580241, 580242, 580243, 580244, 580245, 580246, 580247, 580248, 580249, 580250, 580251, 580252, 580253, 580254, 580255, 580256, 580257, 580258, 580259, 580260, 580261, 580262, 580263, 580264, 580265, 580266, 580267, 580268, 580269, 580270, 580271, 580272, 580273, 580274, 580275, 580276, 580277, 580278, 580279, 580280, 580281, 580282, 580283, 580284, 580285, 580286, 580287, 580288, 580289, 580290, 580291, 580292, 580293, 580294, 581444, 581445, 581446, 581447, 581448, 581453, 581454, 581455, 581456, 581457,	Granted	Ontario, Canada	100%
Pickle Lake – South Limb	100831, 101525, 101526, 102692, 102906, 118004, 118221, 121656, 121657, 125050, 125051, 125052, 125053, 125760, 125760, 125761, 125762, 129676, 129676, 160810, 164956, 166304, 166305, 169680, 169681, 173060, 178291, 178314, 179657, 179657, 189146, 189147, 189148, 194210, 194211, 195563, 218371, 218371, 218371, 219081, 224876, 226523, 226524, 226525, 227088, 231687, 231687, 260845, 262197, 262198, 262198, 265588, 266276, 266277, 266278, 273549, 273550, 273550, 282260, 282261, 285637, 285770, 289638, 289639, 289639, 293068, 293069, 293146, 293147, 297669, 297670, 321676, 321677, 322315, 328833, 328833, 328834, 328834, 328835, 341207, 341208, 341208, 101396, 116721, 166176, 178995, 178996, 178997, 194187, 194187, 194935, 194936, 194937, 225586, 225587, 225588, 232868, 268320, 268320, 268321, 268321, 268322, 268322, 281607, 328186, 535546, 535547, 535548, 535549, 535550, 535551, 535552, 535553, 535554, 535555, 535556, 535557, 551427, 562023, 562024, 562025, 562026	Granted	Ontario, Canada	100%
Pickle Lake – Two Fifty	541335, 541338, 541339, 541340, 541342, 541343, 541347, 541348, 541349, 541351, 541352, 541353, 541354, 541356, 541357, 541362, 541363, 541364, 541365, 541387, 541399, 562623, 562624, 562625, 562626, 562627, 562628, 562629, 562630, 562631, 562632, 562633, 562634, 562635, 562637, 562638, 562639, 562640, 562641, 562642, 562643, 562644, 562645, 562646, 562647	Granted	Ontario, Canada	100%
Pickle Lake – West Pickle	104760, 104760, 104916, 104917, 104918, 104919, 104920, 105656, 105657, 120067, 120068, 126563, 128549, 128549, 128550, 138039,	Granted	Ontario, Canada	100%



ARDIDEN

Gold Projects	Tenement Number/Claim ID	Status	Location	Beneficial Percentage Interest
	138039, 139349, 147534, 147535, 147536, 155122, 155325, 165265, 171104, 171105, 171106, 171107, 171107, 173237, 173238, 173238, 176769, 184045, 187800, 191356, 191356, 191357, 199313, 199314, 199962, 207329, 227360, 227361, 227361, 236415, 239988, 239988, 248070, 248070, 248771, 248771, 248772, 250862, 256698, 256699, 266552, 267218, 267219, 273313, 285880, 285881, 287193, 293994, 295326, 295992, 300139, 303169, 306594, 316767, 316768, 320515, 323119, 323119, 325091, 325091, 325092, 333749, 333750, 333751, 335552, 336241, 336241, 336242, 336242, 338336, 345540, 345540, 345541, 345541, 345542, 345543, 345543, 345543, 541375, 541386			

Lithium Projects	Tenement Number/Claim ID	Status	Location	Beneficial Percentage Interest
Root Bay	101422, 101696, 117902, 121020, 121020, 121042, 122349, 122350, 122351, 122351, 124441, 152951, 160964, 160965, 160966, 166199, 169575, 179044, 179045, 182367, 194973, 196921, 214118, 214119, 217760, 225637, 225637, 225638, 233675, 261574, 262879, 269563, 269564, 269564, 272959, 281639, 281640, 285014, 290289, 290289, 290290, 290290, 298950, 321059, 321565, 328205, 328206, 328225, 328226, 329530, 329531, 340566, 340566, 340588, 340589, 341368, 341368, 341369, 341370	Granted	Ontario, Canada	100%
Root Lake	553204, 553205, 553206, 553207, 553208, 553209, 553210, 553211, 553212, 553213, 553214, 553215, 553216, 553217, 553218, 101503, 101504, 116836, 121133, 121134, 160180, 160180, 160270, 166201, 166202, 166203, 166284, 179021, 214121, 214122, 214123, 214216, 214217, 214218, 232916, 232916, 232917, 232917, 232988, 232989, 269553, 269630, 282239, 289614, 298925, 298925, 298926, 298926, 298927, 298947, 298947, 298948, 328813, 340586, 340587, 340676	Ontario, Canada	Ontario, Canada	100%
Seymour Lake	305606, 305606, 312405, 312405, 110794, 257034, 202394, 269391, 239142, 199576, 209207, 209206, 102009, 103639, 108167, 109057, 109058, 109882, 109882, 109882, 109883, 109884, 110535, 110795, 110795, 110795, 110796, 110796, 111208, 111208, 111240, 111512, 112597, 114199, 114200, 115999, 115999, 116000, 116000, 116001, 118922, 118922, 120826, 120826, 122538, 122538, 123189, 123189, 125514, 126089, 126089, 126089, 126090, 128849, 130705, 130706, 132743, 132743, 132743, 134452, 137057, 137595, 137595, 139233, 139233, 140447, 140448, 142382, 142382, 142383, 142384, 143993, 144333, 144333, 145302, 146398, 147129, 147129, 147130, 147644, 147644, 147645, 147645, 149178, 149204, 150834, 150834, 150834, 152639, 152695, 152695, 154018, 154018, 157231, 157231, 158455, 158455, 158455, 158456, 158595, 158595, 158595, 158595, 158701, 158702, 158739, 158739, 159350, 161036, 161036, 161036, 161037, 161037, 161227, 161228, 161676, 161676, 161676, 164044, 164290, 164290, 164291, 164291, 164672, 165944, 166147, 167316, 167331, 167331, 167714, 167714, 171277, 174901, 174901, 176401, 176401, 176401, 177476, 177476, 177615, 182257, 182257, 182794, 182795, 182795, 182795, 182796, 182796, 182796, 183014, 183611, 183611, 183612, 183612, 184741, 184741, 184742, 184742, 186421, 186421, 186421, 186458, 186459, 186558, 186558, 186683, 186683, 186849, 186850, 186850, 186850, 189693, 189693, 190097, 190097, 190098, 190099, 191608, 192878, 192879, 192879, 193064, 193065, 195436, 196429, 196429, 197307, 197308, 199575, 201118, 201239, 202392, 202392,	Ontario, Canada	Ontario, Canada	100%



ARDIDEN

Lithium Projects	Tenement Number/Claim ID	Status	Location	Beneficial Percentage Interest
	202392, 202393, 202393, 204013, 206643, 209269, 210680, 210717, 211639, 211639, 212521, 213762, 213972, 216046, 216480, 216480, 216480, 216480, 219380, 219487, 219487, 224207, 224208, 226787, 226788, 226788, 228166, 228166, 228166, 230975, 230976, 232543, 232543, 232544, 233869, 233869, 233870, 233870, 233871, 233871, 234515, 234515, 234658, 234658, 237862, 238118, 238118, 238343, 238343, 238343, 239069, 239069, 239197, 239197, 244708, 244708, 246792, 246792, 247152, 247930, 247931, 250469, 250469, 252479, 252530, 252702, 252702, 252702, 252703, 252704, 252704, 252704, 252705, 252705, 252705, 252705, 255760, 255900, 256854, 257033, 257033, 257033, 257911, 257911, 257911, 259408, 259409, 261948, 264527, 264527, 264569, 264570, 265918, 265918, 268004, 270371, 270371, 270371, 270371, 270372, 270372, 271256, 271256, 271302, 271759, 275234, 276648, 277335, 277335, 278196, 278197, 280559, 280560, 280561, 280561, 282491, 282491, 282491, 282661, 282662, 285387, 289913, 289913, 289913, 289914, 290555, 290713, 292949, 292949, 293546, 293546, 297013, 297013, 302513, 304354, 306092, 306092, 306359, 306359, 306504, 307057, 312238, 312772, 312773, 312836, 312836, 313281, 313660, 313660, 313661, 313661, 313805, 313806, 313806, 313807, 313807, 313967, 316941, 317425, 317425, 317425, 318517, 322021, 325851, 326498, 326498, 326802, 327346, 327347, 328430, 328430, 329159, 329159, 331205, 331205, 331233, 332326, 332327, 336637, 337814, 337815, 338473, 338473, 338554, 339017, 339018, 341504, 341504, 341621, 342142, 342142, 342143, 342143, 343145, 343145, 343146, 343147, 343884, 343884, 344314, 344314, 344315, 518640, 518641, 518646, 518652, 518659, 518660, 518666, 518667, 518668, 518673, 518674, 518675, 518676, 518680, 518681, 518682, 518683, 518685, 518686, 519760, 519761, 519762, 519763, 519764, 519765, 519765, 519766, 519767, 519768, 519769, 519770, 519771, 519772, 519773, 519774, 519775, 519776, 519777, 519778, 519779, 519780, 519781, 519782, 519783, 519784, 519785, 519786, 519787, 519788, 519789, 519790, 519791, 519792, 519793, 519794, 519795, 519796, 519797, 519798, 519803, 519804, 519805, 519806, 519807, 519808, 519809, 519810, 519811, 519812, 519813, 519814, 519815, 519816, 519817, 519818, 519819, 519820, 519821, 519822, 519823, 519824, 519825, 519826, 519827, 519828, 519829, 519830, 519831, 519832, 519833, 519834, 519835, 519836, 519837, 519838, 519839, 519840, 519841, 519842, 519843, 519844, 519845, 519846, 519847, 519848, 519849, 519850, 519851, 519852, 519853, 519854, 519855, 519856, 519857, 519858, 519859, 519860, 519861, 519862, 519863, 519864, 519865, 519866, 519867, 519868, 519869, 519870, 519871, 519872, 519873, 519874, 519875, 519876, 519877, 519878, 519879, 519880, 519881, 519882, 519883, 519884, 519885, 519886, 519887, 519888, 519889, 519890, 519891, 519892, 519893, 519894, 519895, 519896, 519897, 519898, 519899, 519900, 519901, 519902, 519903, 519904, 519905, 519906, 519907, 519908, 519909, 519910, 519911, 519912, 519913, 519914, 519915, 519916, 519917, 519918, 519919, 519920, 519921, 519922, 519923, 519924, 519925, 519926, 519927, 519928, 519929, 519930, 519935, 519936, 519937, 519938, 519939, 519940, 519941, 519942, 519943, 519944, 519945, 519946, 519947, 519948, 519949, 519950, 519951, 519952, 519953, 519954, 519955, 519956, 519957, 519958, 519959, 519960, 519961, 519962, 519963, 519964, 519965, 519966, 519967, 519968, 519969, 519970, 519971, 519972, 519973, 519974, 519975, 519976, 519977, 519978, 519979, 519980, 519981, 519982, 519983, 519984, 519985, 519986, 519987, 519988, 519989, 519990, 519991, 519992, 519993, 519994, 519995, 519996, 519997, 519998, 519999, 520000, 520001, 520002,			



ARDIDEN

Lithium Projects	Tenement Number/Claim ID	Status	Location	Beneficial Percentage Interest
	520003, 520004, 520005, 520006, 520007, 520008, 520009, 520010, 520011, 520012, 520013, 520014, 520015, 520016, 520017, 520018, 520019, 520020, 520021, 520022, 520023, 520024, 520025, 520026, 520027, 520028, 520029, 520030, 520031, 520032, 520033, 520034, 520035, 520036, 520037, 520038, 520039, 520040, 520041, 520042, 520043, 520044, 520045, 520046, 520047, 520048, 520049, 520050, 520051, 520052, 520053, 520054, 520055, 520056, 520057, 520058, 520059, 520060, 520061, 520062, 520063, 520064, 520065, 520066, 520067, 520068, 520069, 520070, 520071, 520072, 520073, 520074, 520075, 520076, 520077, 520078, 520079, 520080, 520081, 520082, 520083, 520084, 520085, 520086, 520087, 520088, 520089, 520090, 520091, 520092, 520093, 520094, 520095, 520096, 520097, 520098, 520099, 520100, 520101, 520102, 520103, 520104, 520105, 520106, 520107, 520108, 520109, 520110, 520111, 520112, 520113, 520114, 520115, 520116, 520117, 520118, 520119,			
Wisa Lake	113513, 131136, 131136, 145905, 159951, 176985, 176986, 183797, 195845, 195845, 212601, 212614, 213853, 213854, 224167, 224168, 230802, 243004, 250542, 262540, 262540, 269309, 269310, 307936, 308449, 308450, 317062, 327963, 329248, 329248, 338625, 103529, 103529, 118801, 118801, 118802, 133592, 133592, 150259, 161045, 167103, 167103, 178817, 198377, 215841, 215842, 215843, 234393, 244999, 246563, 246564, 252720, 252720, 253045, 253045, 253046, 271771, 271772, 281855, 281855, 281856, 282740, 282741, 289548, 289548, 301603, 301603, 329645, 103846, 118618, 118619, 119131, 119132, 119132, 119133, 129848, 157769, 157769, 164373, 177777, 177777, 177778, 177779, 193276, 193277, 223146, 231115, 231116, 231116, 231808, 243329, 297767, 338787		Ontario, Canada	100%
Root Lake Patents	MLO-13011, MLO-13014, MLO-13016, PAT-51965, PAT-51966, PAT-51967, PAT-51968, PAT-51969, PAT-51970, PAT-51971, PAT-51972, PAT-51973, PAT-51974, PAT-51975, PAT-51976, PAT-51977, PAT-51978, PAT-51979, PAT-51980, PAT-51981, PAT-51982, PAT-51983, PAT-51984, PAT-51985, PAT-51986, PAT-51987, PAT-51988, PAT-51989, PAT-51990, PAT-51991, PAT-51992, PAT-51993, PAT-51994, PAT-51995, PAT-51996, PAT-51997		Ontario, Canada	100%

Graphite Projects	Tenement Number/Claim ID	Status	Location	Beneficial Percentage Interest
Manitouwadge	106808, 106808, 110086, 118723, 134369, 151037, 160975, 178748, 178749, 178749, 185993, 185994, 185994, 206507, 206508, 215274, 215274, 233311, 233312, 233313, 245488, 245488, 252658, 252659, 254326, 265818, 265819, 265820, 271715, 271716, 271717, 271717, 271718, 271718, 271719, 281804, 289867, 302379, 302380, 302381, 318725, 318725, 329071, 128662, 242045, 246007, 246007, 248870, 271714, 271714, 281805, 281805, 109041, 113625, 113626, 120303, 131666, 131666, 131972, 148355, 148356, 148356, 148357, 162102, 162103, 177448, 184310, 213679, 214769, 216286, 251308, 251595, 251596, 251597, 251598, 251598, 262718, 270688, 270689, 270690, 280111, 280112, 298697, 298697, 299651, 300011, 317648, 317649, 317650, 317651, 330634, 330635, 332614, 338507, 338508, 338509		Ontario, Canada	100%

2. Mining tenements acquired during the quarter and their location:



ARDIDEN

Gold Projects	Tenement Number	Status	Location	Beneficial Percentage Interest
NIL				

3. Mining tenements disposed of during the quarter and their location:

Project	Tenement Number	Status	Location	Comment
NIL				